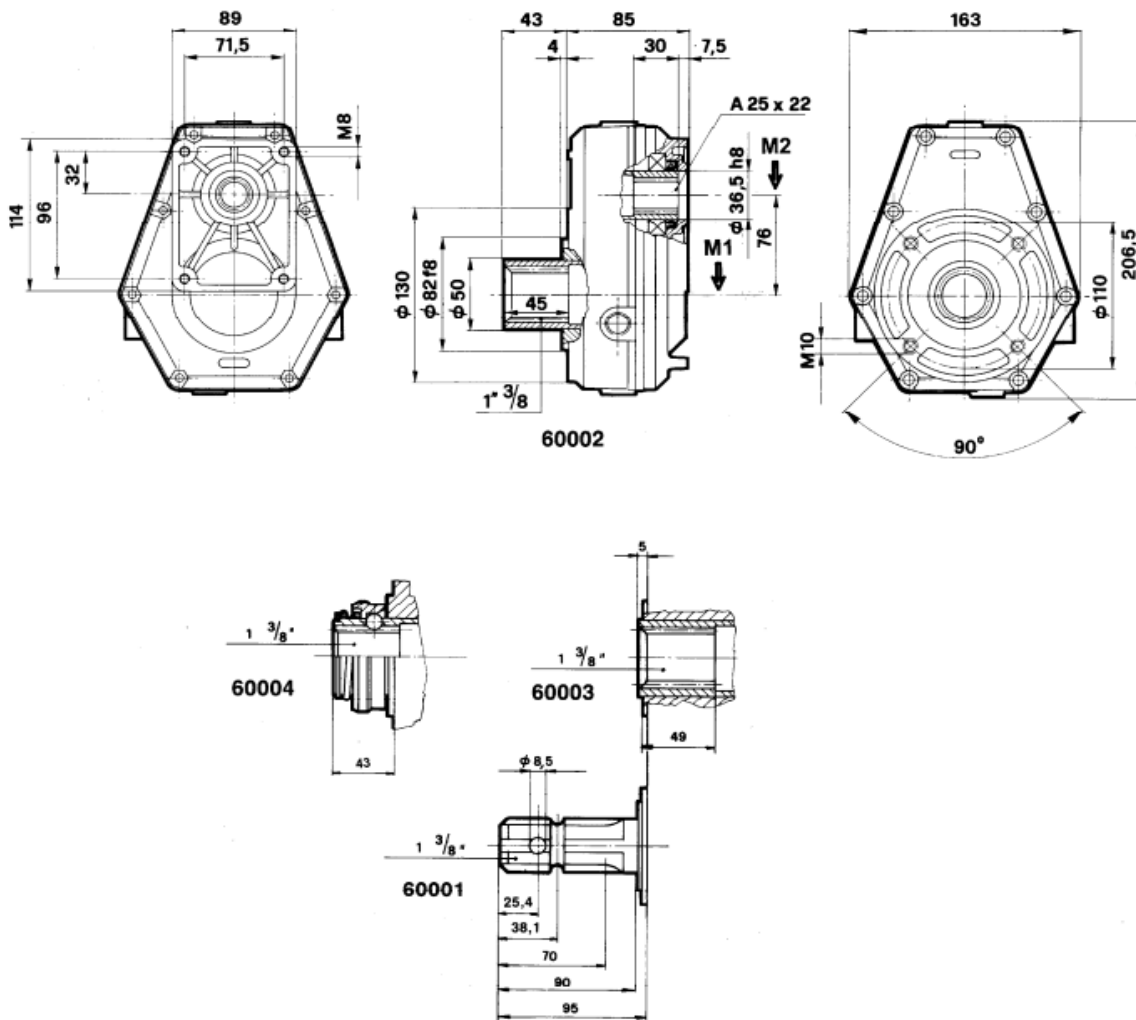


# HAJTÓMŰVEK 2012

GYÁRTÓ : OLEODINAMICA BORELLI Olaszország

Széria

60001  
60002  
60003  
60004

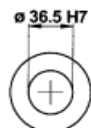


max. olajmennyiség : Lt. 0,220

M1	M2	N. 1 Fordulat	N. 2 Fordulat	Áttétel	Teljesítmény	Súly
daNm	daNm	R.P.M. U/min	R.P.M. U/min	N. 1 / N. 2	KW	Kg
17,8	11,9	540	810	1,5	10	5,5
15,2	7,6	540	1080	2	10	5,5
16,5	6,6	540	1350	2,5	10	5,5
18	5,5	540	1680	3	10	5,5
18,6	5,8	540	1836	3,5	10	5,5
15,9	4,2	540	2052	3,8	10	5,5

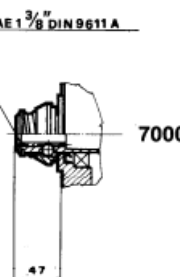
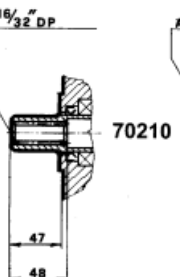
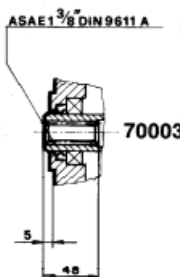
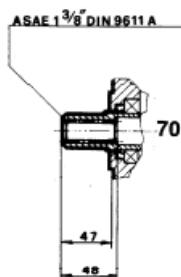
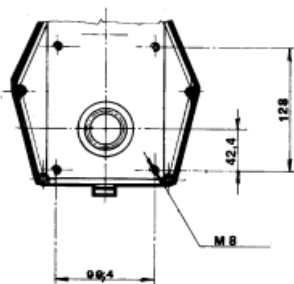
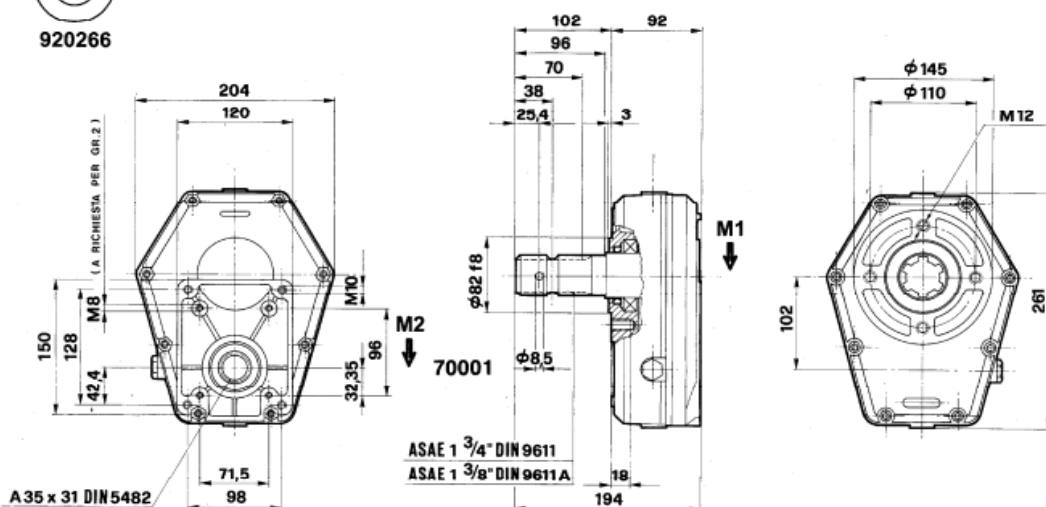
15,2	7,6	540	1080	2	10	5,5
16,5	6,6	540	1350	2,5	10	5,5
18	5,5	540	1680	3	10	5,5
18,6	5,8	540	1836	3,5	10	5,5
15,9	4,2	540	2052	3,8	10	5,5

70001  
70002  
70003  
70004  
70210



Anello di centraggio pompa Gr. 2

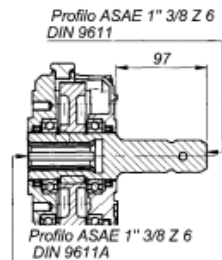
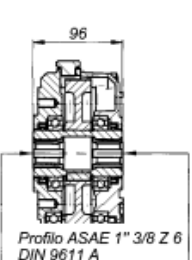
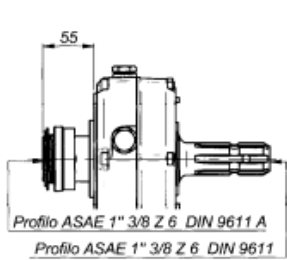
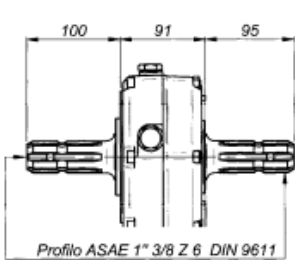
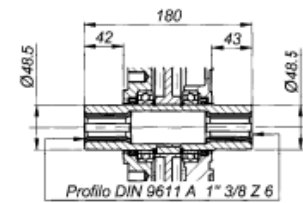
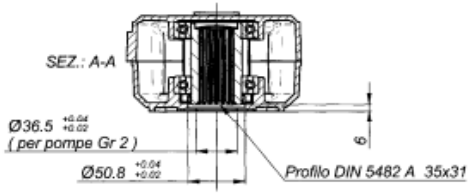
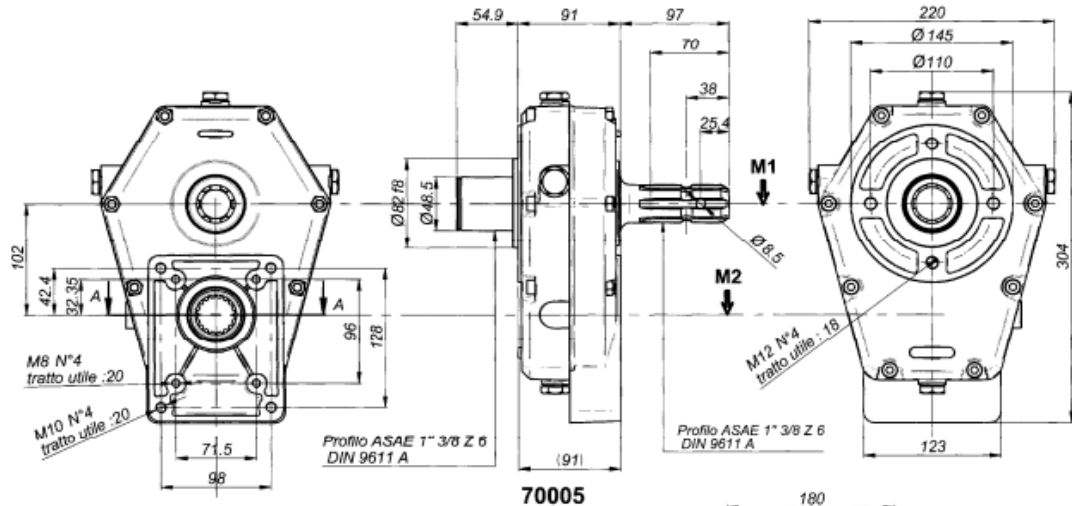
920266



max. olajmennyiség : Lt. 0,350

M1	M2	N. 1 Fordulat	N. 2 Fordulat	Áttétel	Teljesítmény	Súly
daNm	daNm	R.P.M. U/min	R.P.M. U/min	N. 1 / N. 2	KW	Kg
31	31	540	540	1	20	8,1
38	26	540	810	1,5	20	8,1
43	21	540	1080	2	20	8,1
46	18	540	1408	2,5	20	8,1
49	16	540	1620	3	20	8,1
46	13	540	1836	3,5	20	8,1
43,7	11,5	540	2057	3,8	20	8,1

70005  
70006  
70007  
70008  
70009  
70011



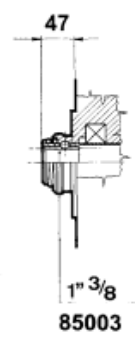
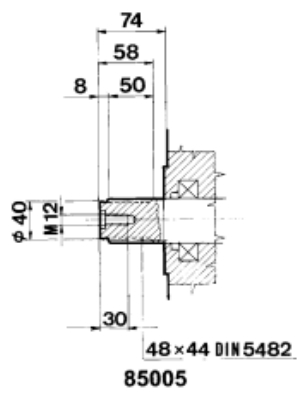
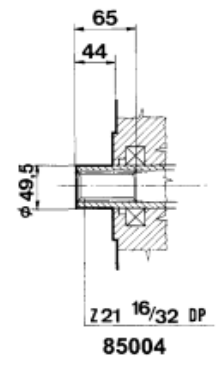
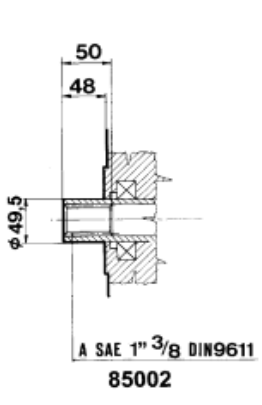
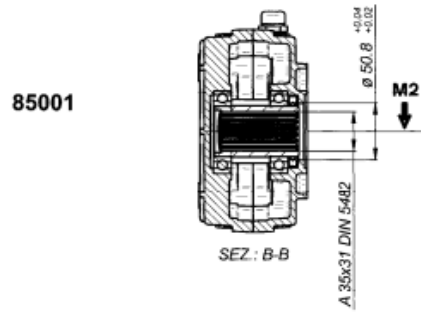
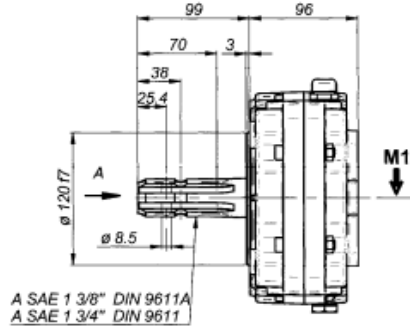
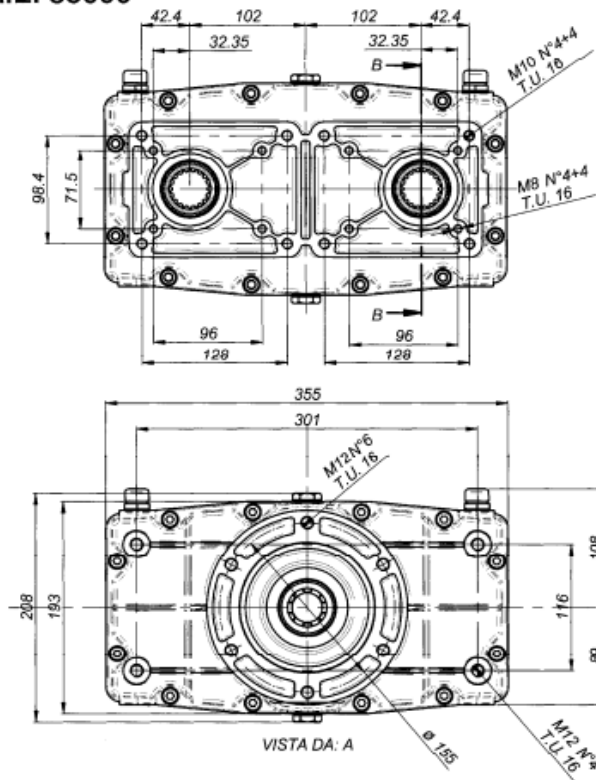
max. olajmennyiség : Lt. 0,350

M1	M2	N. 1 Fordulat	N. 2 Fordulat	Áttétel	Teljesítmény	Súly
daNm	daNm	R.P.M. U/min	R.P.M. U/min	N. 1 / N. 2	KW	Kg
31	31	540	540	1	20	9,5
38	26	540	810	1,5	20	9,5
43	21	540	1080	2	20	9,5
46	18	540	1408	2,5	20	9,5
49	16	540	1620	3	20	9,5
46	13	540	1836	3,5	20	9,5
43,7	11,5	540	2057	3,8	20	9,5



85001  
85002  
85003

SERIE: 85000

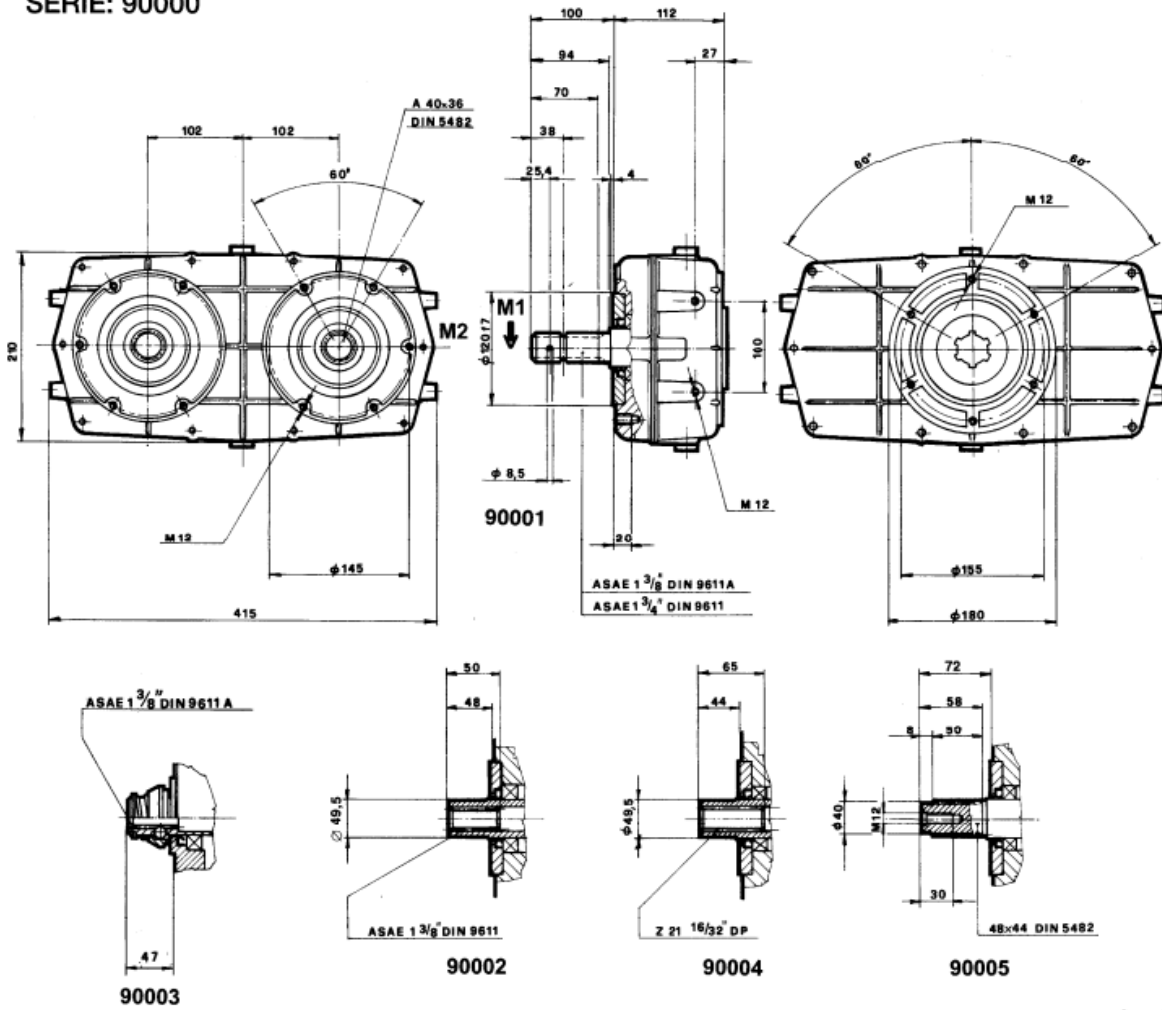


max. olajmennyiség : Lt. 1,30

M1 da Nm	M2 da Nm	N.1 Fordulat R.P.M. U/min	N.2 Fordulat R.P.M. U/min	Áttétel N1/N2	Teljesítmény Kw	Súly Kg
63,4	31,7	540	540	1	35	14
76,8	25,6	540	810	1.5	35	14
86,8	23,7	540	1080	2	35	14
92,5	17,8	540	1408	2.5	35	14
96,6	16,1	540	1620	3	35	14
90,4	13,3	540	1836	3.5	35	14
87,4	16,6	540	2057	3.8	35	14

90001  
90002  
90003  
90005

SERIE: 90000

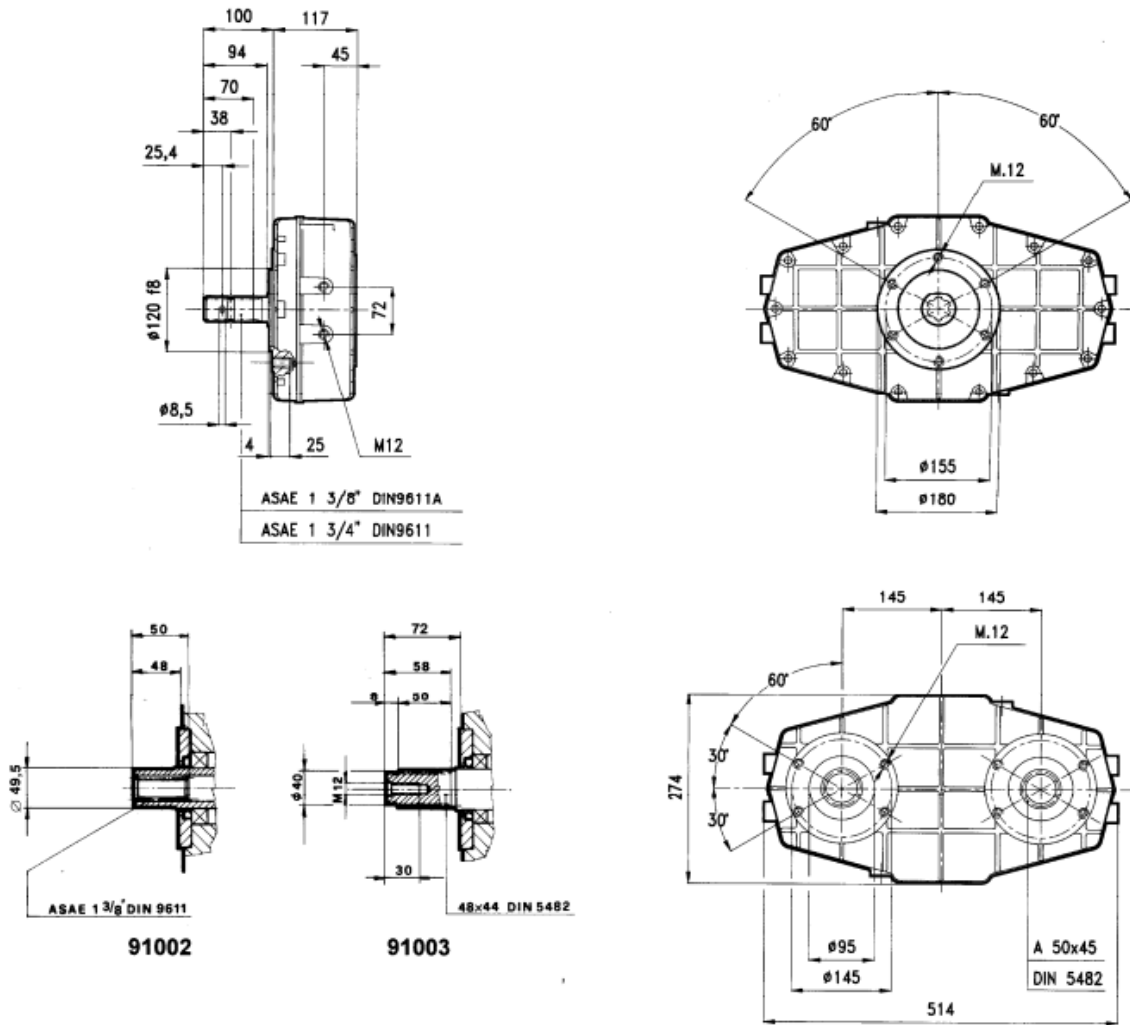


max. olajmennyiség : Lt. 1,80

M1	M2	N. 1 Fordulat	N. 2 Fordulat	Áttétel	Teljesítmény	Súly
daNm	daNm	R.P.M. U/min	R.P.M. U/min	N. 1 / N. 2	KW	Kg
93,4	46,6	540	540	1	45	18
96	32	540	810	1,5	45	18
96,8	24,2	540	1080	2	45	18
93,6	18	540	1408	2,5	45	18
97,8	16,3	540	1620	3	42	18
91,8	13,1	540	1836	3,5	45	18
95	12	540	2052	3,8	45	18
94,40	11,8	540	2160	4	45	18
94	9,8	540	2592	4,8	45	18

91002

91003

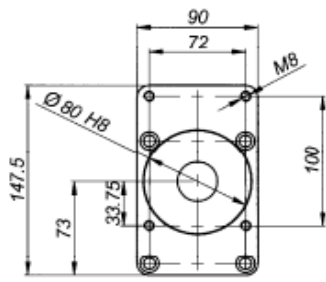


max. olajmennyiség : Lt 2.00

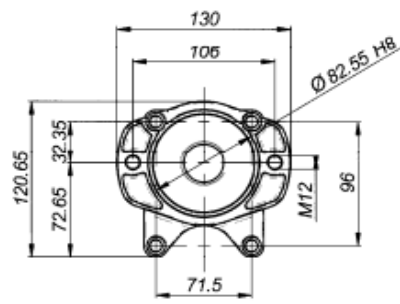
M1 da Nm	M2 da Nm	N.1 Fordulat R.P.M. U/min	N.2 Fordulat R.P.M. U/min	Áttétel N1/N2	Teljesítmény Kw	Súly Kg
132	66	540	540	1	74	20
158	52	540	810	1.5	74	20
163	39	540	1080	2	74	20
174	31	540	1350	2.5	74	20
177	27	540	1620	3	74	20
170	23	540	1836	3.5	74	20
158	20	540	2030	3.8	74	20

60100

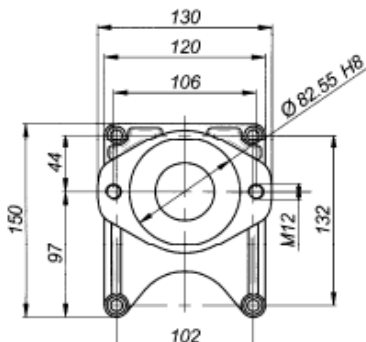
96100



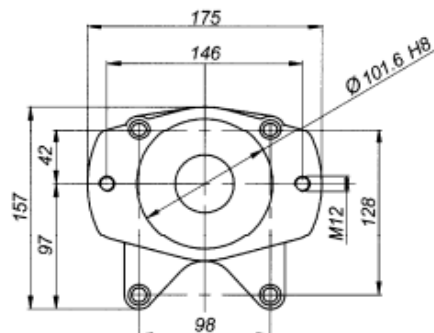
50100



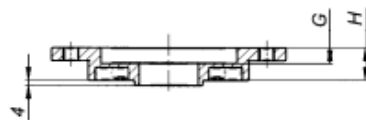
60100



96100



96101

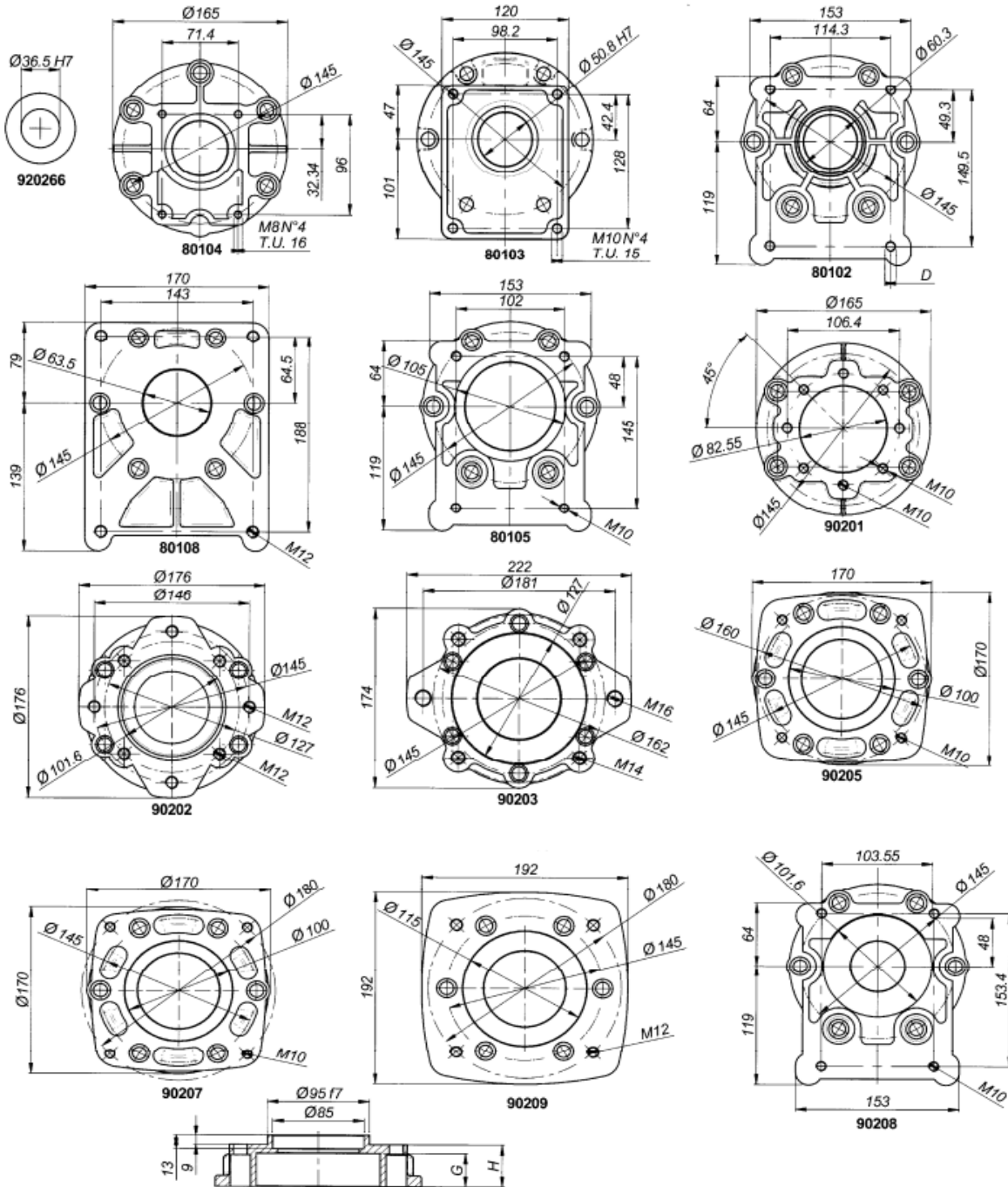


	FLANGIA : TIPO , BRIDE : TYPE , FLANGE : TYPE , FLANSCHTYPE			
	Gr.2 BOSCH	SAE A Gr.2	SAE A Gr.3	SAE B Gr.3
Code	50100	60100	96100	96101
G	8	12	10	12
H	13	32	16	24



80102  
80103  
80104  
80105

90201  
90202  
90203



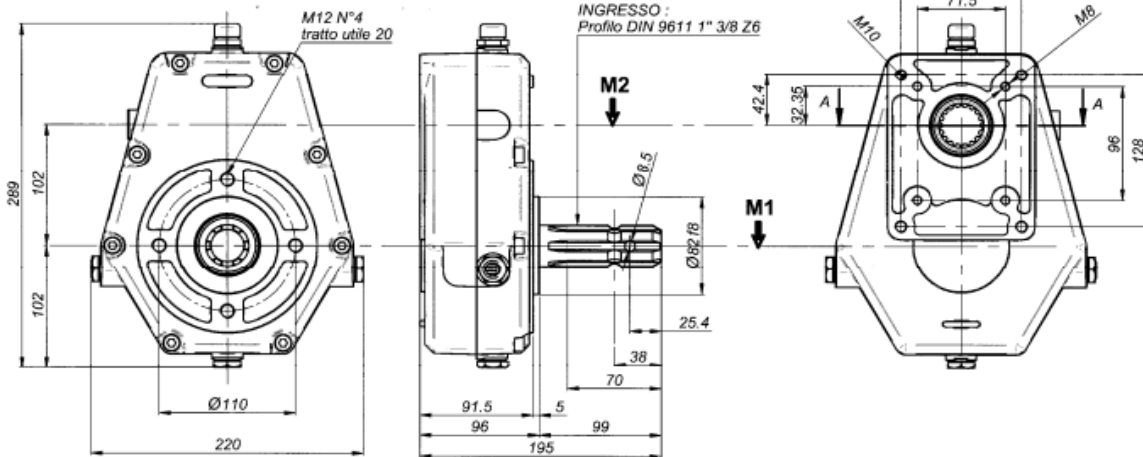
Code.	FLANGIA : TIPO , BRIDE : TYPE , FLANGE : TYPE , FLANSCHTYPE											
	Gr.2	Gr.3	Gr.3.5	Gr.4	Gr.3 Bosch	SAE A	SAE B	SAE C	L.G. 20-35	L.G.50	L.G.75	ULTRA SPL.COMTY
	80104	80103	80102	80108	80105	90201	90202	90203	90205	90207	90209	90208
G	21	22	24,5	36	12	25	12	15	20,5	33	57	10
H	21	22	24,5	36	24	25	25	28	26,5	43	72	24

70013

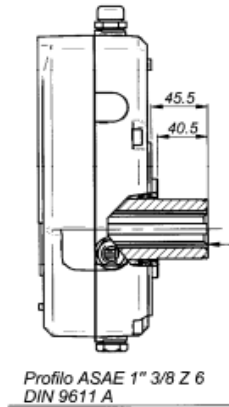
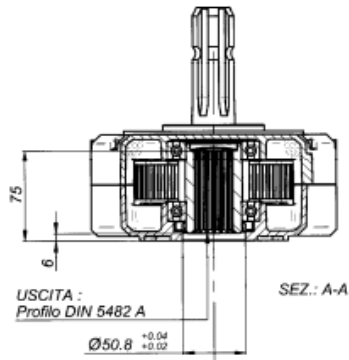
70015



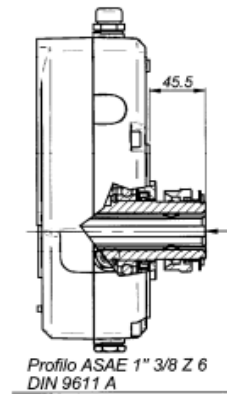
Anello di centraggio pompa Gr. 2



A richiesta per Gr. 2



70013



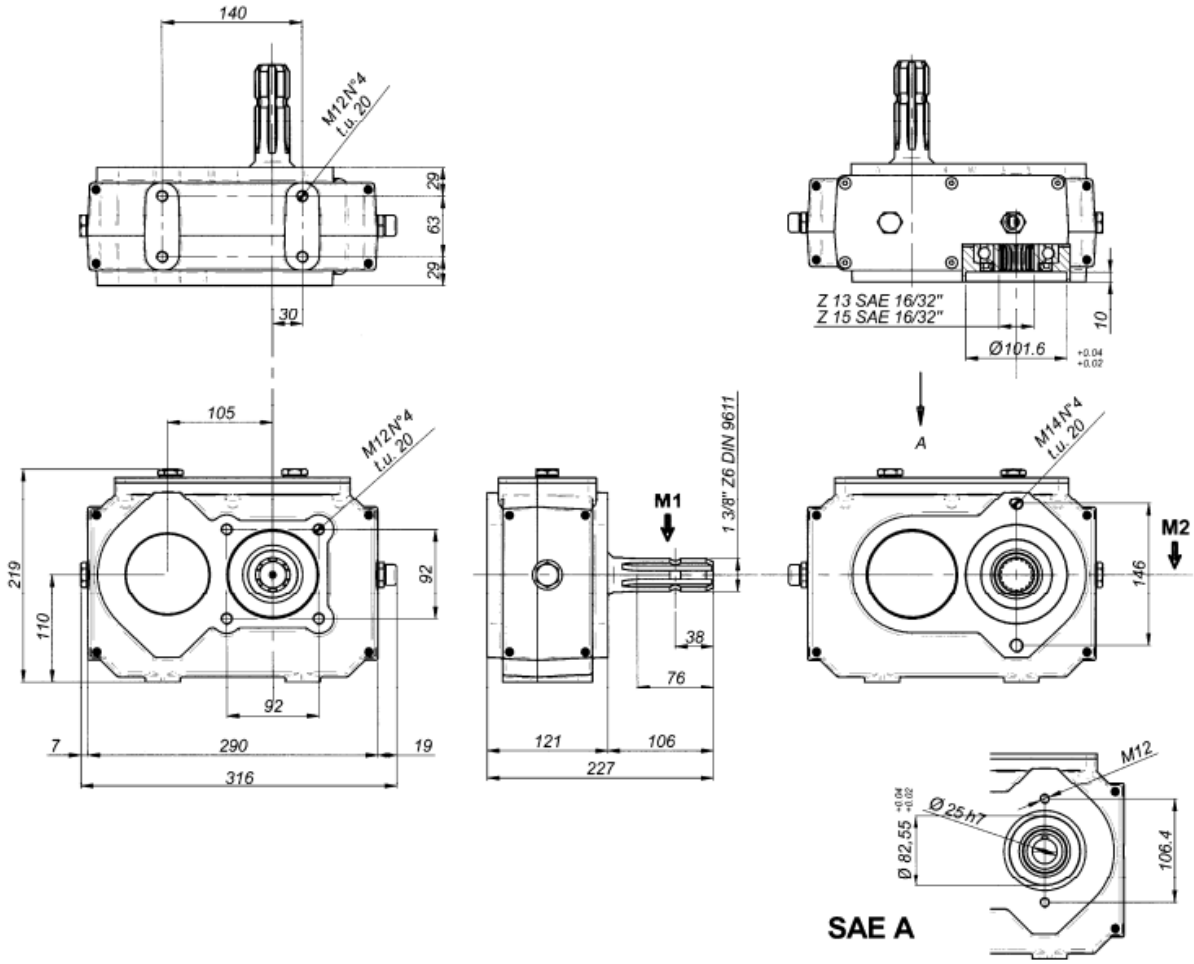
70015

max. olajmennyiség : Lt. 0,520

M1 da Nm	M2 da Nm	N.1 Fordulat R.P.M. U/min	N.2 Fordulat R.P.M. U/min	Áttétel N1/N2	Teljesítmény Kw	Súly Kg
66	66	540	540	1	37	14.5
66	44	540	810	1.5	37	14.5
66	33	540	1080	2	37	14.5
66	26.4	540	1408	2.5	37	14.5
66	22	540	1620	3	37	14.5
66	18	540	1836	3.5	35	14.5
66	16.6	540	2057	3.8	35	14.5

97601

SERIE: 97601



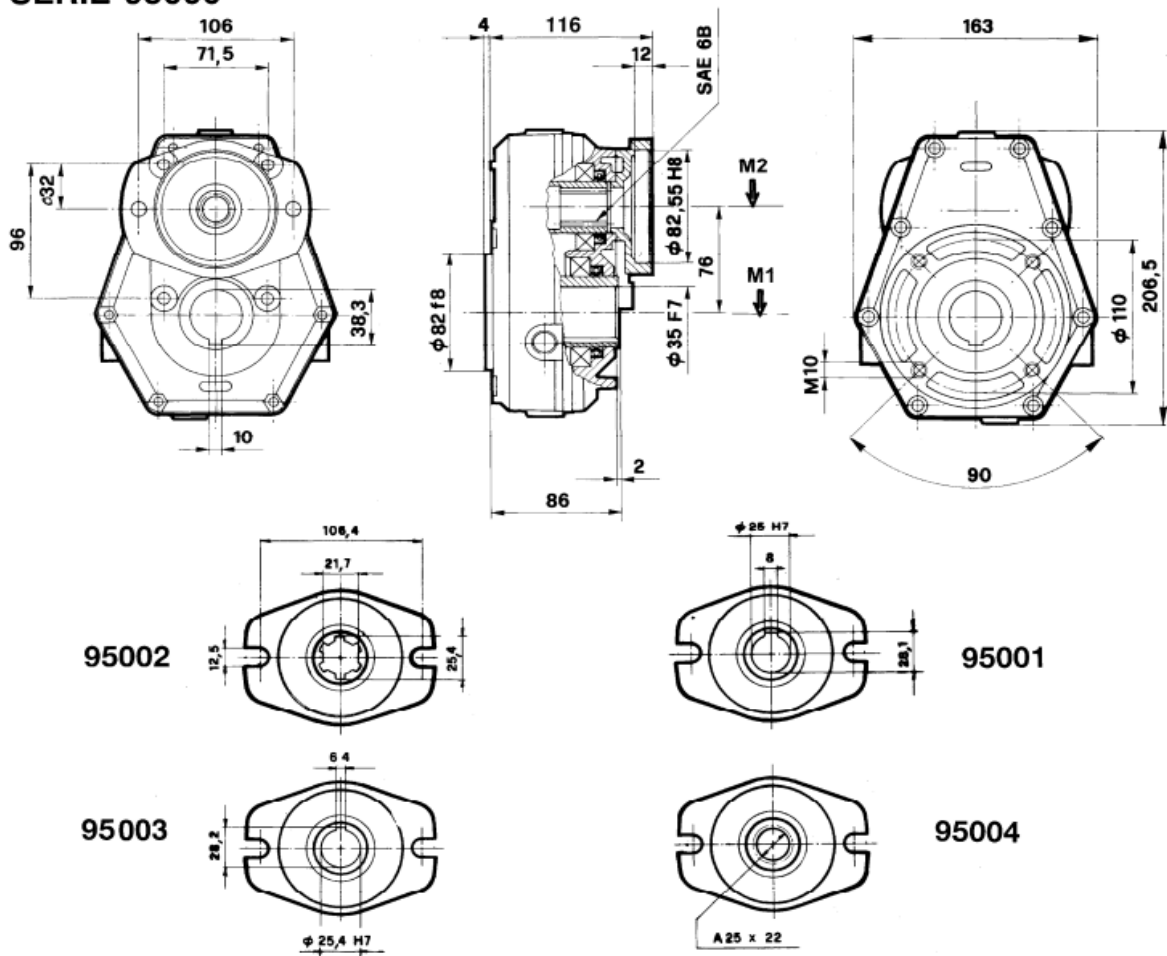
olajmennyiség : Lt. 1,50

M1 da Nm	M2 da Nm	N.1 Fordulat U/min	N.2 Fordulat R.P.M. U/min	Áttétel N1/N2	Teljesítmény kw	Súly Kg
58	58	200	200	1	68	16
82.5	55	200	300	1.5	68	16
98	49	200	400	2	68	16
112.5	45	200	500	2.5	68	16
132	44	200	600	3	68	16
112.5	35	200	680	3.5	68	16
110.2	29	200	760	3.8	68	16

# ÁTTÉTELHAJTÓMŰVEK HIDROMOTOROKHOZ

- 95001
- 95002
- 95003
- 95004

## SERIE 95000



max. olajnyomás : It 0,220

M1 da Nm	M2 da Nm	N. 1 Fordulat H.P.M. U/min	N. 2 Fordulat R.P.M. U/min	Áttétel N.1/N.2	Teljesítmény Kw	Súly Kg
19,6	13,1	200	300	1,5	10	5
17,6	8,8	200	400	2	10	5
19,2	7,7	200	500	2,5	10	5
20,1	6,7	200	600	3	10	5
21,4	6,3	200	700	3,5	10	5
18,6	4,9	200	760	3,8	10	5

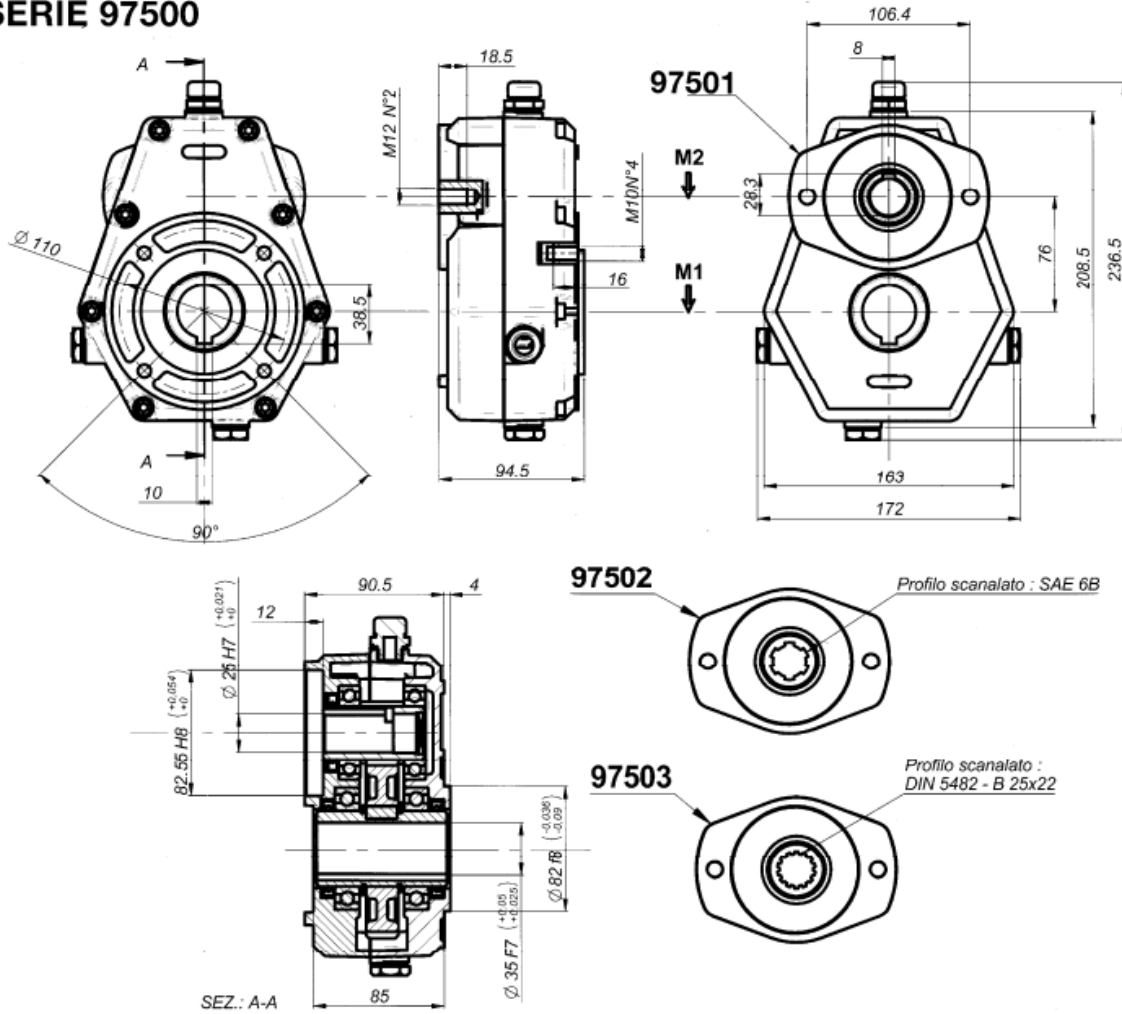


97501

97502

97503

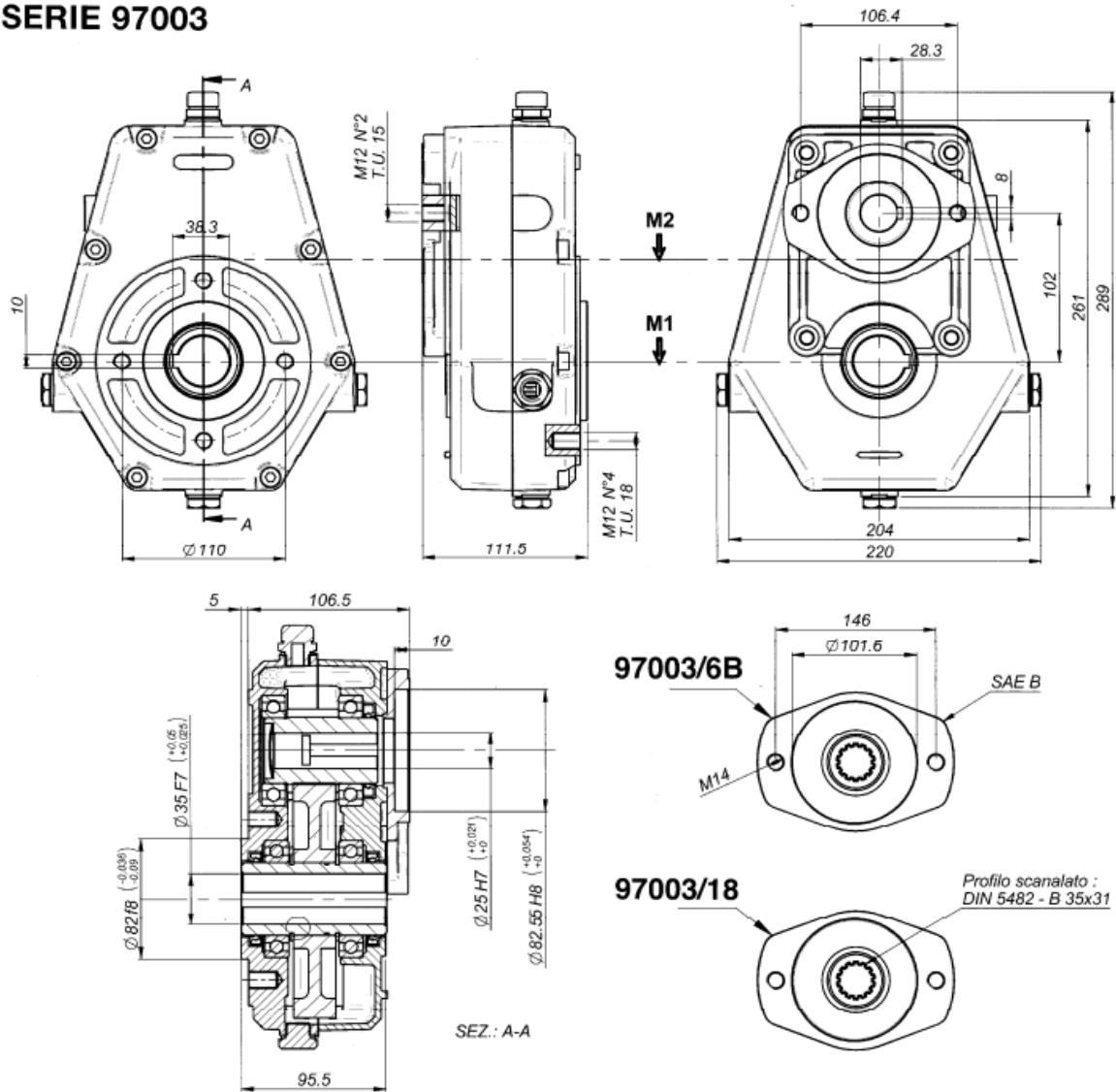
**SERIE 97500**



max. olajnyomás : lt 0,220

M1 da Nm	M2 da Nm	N. 1 fordulat R.P.M. U/min	N. 2 fordulat R.P.M. U/min	Áttétel N.1/N.2	Teljesítmény Kw	Súly Kg
24,7	16,5	200	300	1,5	18	10
32,4	16,2	200	400	2	18	10
38,7	15,5	200	500	2,5	18	10
24,0	8,0	200	600	3	18	10
25,5	7,5	200	680	3,5	18	10
26,6	7,0	200	760	3,8	18	10

# SERIE 97003

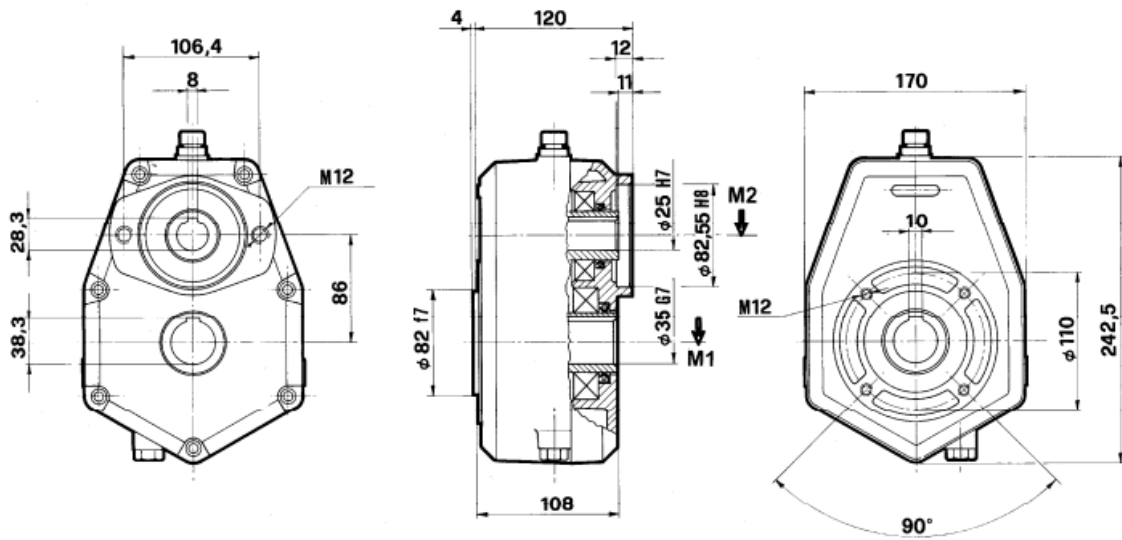


max. olajmennyiség: ± lt 0,520

M1 da Nm	M2 da Nm	N.1 Fordulat R.P.M. U/min	N.2 Fordulat R.P.M. U/min	I Áttétel N1/N2	Teljesítmény Kw	Súly Kg
66	66	540	540	1	37	14.5
66	44	540	810	1.5	37	14.5
66	33	540	1080	2	37	14.5
66	26.4	540	1408	2.5	37	14.5
66	22	540	1620	3	37	14.5
66	18	540	1836	3.5	35	14.5
66	16.6	540	2057	3.8	35	14.5

97001

**SERIE 97001**

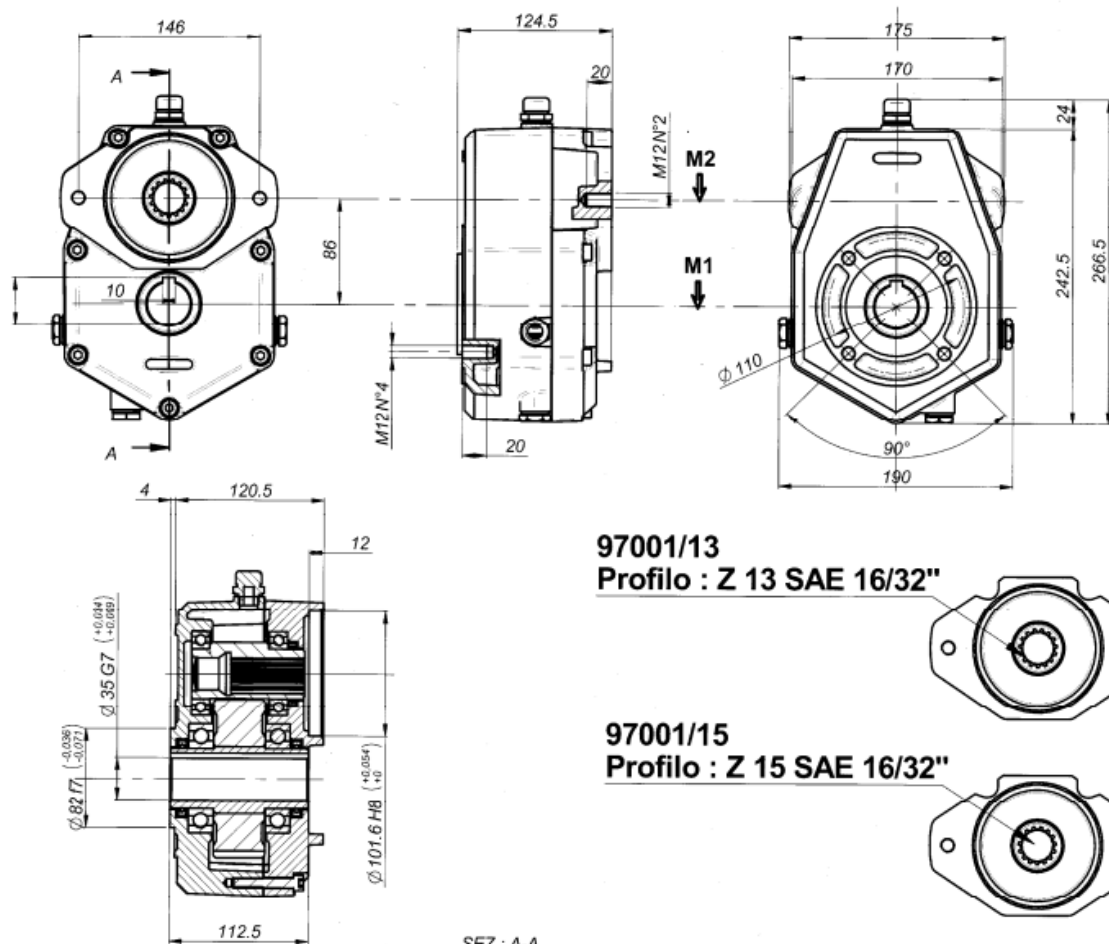


max. olajmennyiség : lt 0,300

M1 da Nm	M2 da Nm	N.1 Fordulat R.P.M. U/min	N.2 Fordulat R.P.M. U/min	I Áttétel N1/N2	Teljesítmény Kw	Súly Kg
58	58	200	200	1	68	16
82.5	55	200	300	1.5	68	16
98	49	200	400	2	68	16
112.5	45	200	500	2.5	68	16
132	44	200	600	3	68	16
122.5	35	200	680	3.5	68	16
110.2	29	200	760	3.8	68	16



## SERIE 97001/13 - 97001/15



max. olajmennyiség : **lt 0,300**

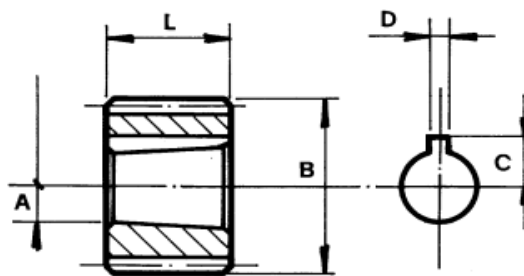
M1 da Nm	M2 da Nm	N.1 Fordulat R.P.M. U/min	N.2 Fordulat R.P.M. U/min	Áttétel N1/N2	Teljesítmény Kw	Súly Kg
58	58	200	200	1	68	16
82.5	55	200	300	1.5	68	16
98	49	200	400	2	68	16
112.5	45	200	500	2.5	68	16
132	44	200	600	3	68	16
122.5	35	200	680	3.5	68	16
110.2	29	200	760	3.8	68	16

## Menesztőperselyek szivattyúkhoz, hidromotorokhoz

10005

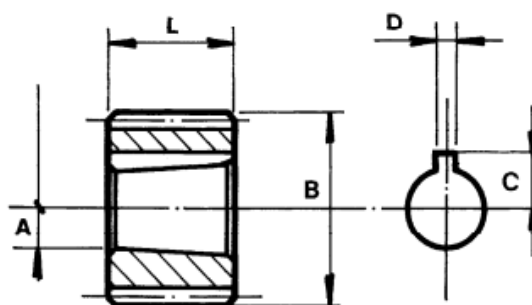
10014

10026



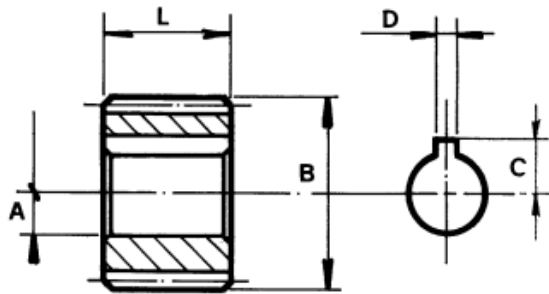
Kúposág = 1:8

Codice Code Code No. Codenummer	Tipo pompa Type Pompe Pump type Pumpentype	Gruppo pompa Groupe pompe Pump assembly Pumpenaggregate	Profilo DIN 5482 B Profil DIN 5482 B1 Profilie DIN 5482 B Profil nach DIN 5482B	N° Denti Nb. Dents No. of teeth Anzahl Zähne	A	B	C	D	L
10001	1	1	20 × 17	12	8	19,5	5,7	2,4	14,5
10002	0,5	2/0,5	20 × 17	12	6	19,5	4	2	7
10003	1	2/1	25 × 22	14	8	24,5	5,7	2,4	14,5
10004	0,5	2/1	25 × 22	14	6	24,5	4	2	9
10033	1 MARZOCCHI	2/1	25 × 22	14	12	24,5	8,5	3	16
* 10005	2	2	25 × 22	14	14,2	24,5	9,3	3,17	22
* 10026	2 TUROLLA	2	25 × 22	14	14,5	24,5	9,1	4	22,5
10007	2	2	28 × 25	15	14,2	27,5	9,7	3,17	22
10035	2	2	28 × 25	15	14,5	27,5	9,7	4	22,5
10036	1	2,5/1	32 × 28	17	8	31,5	5,7	2,4	14,5
10039	1 MARZOCCHI	2,5/1	32 × 28	17	12	31,5	8,5	3	16
10008	2	2,5/2	32 × 28	17	14,2	31,5	9,7	3,17	22
10040	2 TUROLLA	2,5/2	32 × 28	17	14,5	31,5	9,7	4	22,5
10009	2,5	2,5	32 × 28	17	18,7	31,5	11,6	4	26
10010	1	3/1	35 × 31	18	8	34,5	5,7	2,4	14,5
10043	1 MARZOCCHI	3/1	35 × 31	18	12	34,5	8,5	3	16
10012	2	3/2	35 × 31	18	14,2	34,5	9,7	3,17	22
10044	2 TUROLLA	3/2	35 × 31	18	14,5	34,5	9,7	4	22,5
* 10014	3	3	35 × 31	18	18,7	34,5	12,5	4	26
10046	1	3,5/1	35 × 31	20	8	39,5	5,7	2,4	14,5
10049	1 A RICHIESTA	3,5/1	40 × 36	20	9,7	39,5	6,7	3	16
10050	1 MARZOCCHI	3,5/1	40 × 36	20	12	39,5	8,5	3	16
10015	2	3,5/2	40 × 36	20	14,2	39,5	9,7	3,17	22
10051	2 TUROLLA	3,5/2	40 × 36	20	14,5	39,5	9,7	4	22,5
10016	3	3,5/3	40 × 36	20	18,7	39,5	12,5	4	26
10017	3,5	3,5	40 × 36	20	21,2	39,5	15,1	4,76	32
10052	3,5 TUROLLA	3,5	40 × 36	20	23,7	39,5	15	6	38



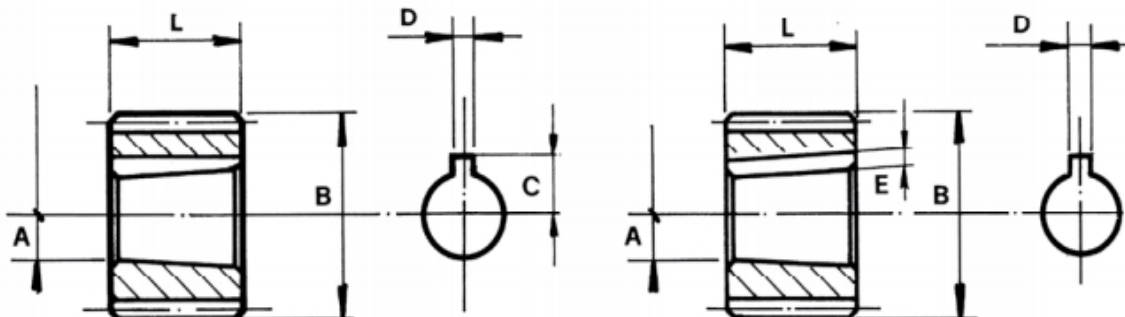
Küposság = 1:8

Codice Code Code No. Codenummer	Tipo pompa Type Pompe Pump type Pumpentype	Gruppo pompa Groupe pompe Pump assembly Pumpenaggregate	Profilo DIN 5482 B Profil DIN 5482 B1 Profile DIN 5482 B Profil nach DIN 5482B	N° Denti Nb. Dents No. of teeth Anzahl Zähne	A	B	C	D	L
10023	1	4/1	48 × 44	23	8	47,5	5,7	2,4	14,5
10055	1 Marzocchi	4/1	48 × 44	23	12	47,5	8,5	3	16
10018	2	4/2	48 × 44	23	14,2	47,5	9,7	3,17	22
10056	2 Turolla	4/2	48 × 44	23	14,5	47,5	9,7	4	22,5
10019	3	4/3	48 × 44	23	18,7	47,5	12,5	4	26
10020	3,5	4/3,5	48 × 44	23	21,2	47,5	15,1	4,76	32
10057	3,5 Marzocchi	4/3,5	48 × 44	23	21,2	47,5	15,1	5	32
10058	3,5 Turolla	4/3,5	48 × 44	23	23,7	47,5	15	6	38
10021	4	4	48 × 44	23	27,7	47,5	18,7	6,35	42
10059	4 Marzocchi	4	48 × 44	23	27,7	47,5	19,4	7	42
10060	2	5/2	58 × 53	27	14,2	57,5	9,7	3,17	22
10061	2 Turolla	5/2	58 × 53	27	14,5	57,5	9,7	4	22,5
10062	3	5/3	58 × 53	27	18,7	57,5	12,5	4	26
10063	3,5	5/3,5	58 × 53	27	21,2	57,5	15,1	4,76	32
10064	3,5 Marzocchi	5/3,5	58 × 53	27	21,2	57,5	15,1	5	32
10065	3,5 Turolla	5/3,5	58 × 53	27	23,7	57,5	15	6	38
10066	4	5/4	58 × 53	27	27,7	57,5	18,7	6,35	42
10067	4 Marzocchi	5/4	58 × 53	27	27,7	57,5	19,4	7	42
10068	2	6/2	72 × 66	33	14,2	71,3	9,7	3,17	22
10069	2 Turolla	6/2	72 × 66	33	14,5	71,3	9,7	4	22,5
10070	3	6/3	72 × 66	33	18,7	71,3	12,5	4	26
10071	3,5	6/3,5	72 × 66	33	21,2	71,3	15,1	4,76	32
10072	4	6/4	72 × 66	33	27,7	71,3	18,7	6,35	42
10073	3	7/3	80 × 74	36	18,7	79,3	12,5	4	26
10074	3,5	7/3,5	80 × 74	36	21,2	79,3	15,1	4,76	32
10075	4	7/4	60 × 74	36	27,7	79,3	18,7	6,35	42
10076	3	8/3	100 × 94	44	18,7	99,3	12,5	4	26
10077	3,5	8/3,5	100 × 94	44	21,2	99,3	15,1	4,76	32
10078	4	8/4	100 × 94	44	27,7	99,3	18,7	6,35	42



### Hengeres csatlakozás

Codice Code Code No. Codenummer	Tipo pompa Type Pompe Pump type Pumpentype	Gruppo pompa Groupe pompe Pump assembly Pumpenaggregate	Profilo DIN 5482 B Profil DIN 5482 B1 Profile DIN 5482 B Profil nach DIN 5482B	N° Denti Nb. Dents No. of teeth Anzahl Zähne	A	B	C	D	L
10027	0,5	1/0,5	20 × 17	12	6	19,5	4	2	9
10028	9,5 Turolla	1/0,6	20 × 17	12	7	19,5	4,6	2	9
10029	1	1	20 × 17	12	12	19,5	7,6	3	13,5
10030	0,5	2/0,5	25 × 22	14	6	24,5	4	2	9
10031	0,5	2/0,6	25 × 22	14	7	24,5	9	2	4,6
10032	1	2/1	25 × 22	14	12	24,5	7,6	3	13,5
10034	2	2	25 × 22	14	15	24,5	8,4	4	31
10037	1	2,5/1	32 × 28	17	12	31,5	7,6	3	13,5
10041	3	2,5/3	32 × 28	17	20	31,5	11,8	5	41
10042	1	3/1	35 × 31	18	12	34,5	7,6	3	13,5
10045	2	3/2	35 × 31	18	15	34,5	9,2	4	31
10047	3	3	35 × 31	18	20	34,5	11,8	5	41
10048	1	3,5/1	40 × 36	20	12	39,5	7,6	3	13,5
10053	1	4/1	48 × 44	23	12	47,5	7,6	3	13,5



Kúposság = 1:5

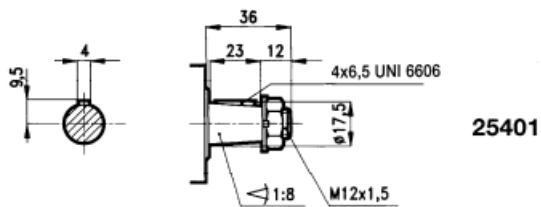
N° Codice Code Code No. Codenummer	Tipo pompa Type Pompe Pump type Pumpentype	Gruppo pompa Groupe pompe Pump assembly Pumpenaggregate	Profilo DIN 5482 B Profil DIN 5482 B1 Profilie DIN 5482 B Profil nach DIN 5482B	N° Denti Nb. Dents No. of teeth Anzahl Zähne	A	B	C	D	E	L
10501	A	1	20 x 17	12	7,6	19,5		2	1	12
10502	A	2/1	25 x 22	14	8	24,5		2	1	10
*10503	B	2	25 x 22	14	13	24,5	9,2	3		20
10504	B	2	28 x 25	15	13	27,5		3	1,9	20
10505	A	2,5/1	32 x 28	17	8	31,5		2	1,9	20
10506	B	2,5/2	32 x 28	17	13,2	31,5		3	1,9	20
10518	C	2,5	32 x 28	17	15,2	31,5		4	2,1	24
10507	B	3/2	35 x 31	18	13	34,5		3	1,9	20
*10508	D	3	35 x 31	18	19,6	34,5	13,7	5		25
10509	B	3,5/2	40 x 36	20	13,2	39,5		3	1,9	20
10510	C	3,5/2,5	40 x 36	20	15,2	39,5		4	2,1	24
10519	D	3,5/3	40 x 36	20	19,6	39,5		5	2,5	25
10511	B	4/2	48 x 44	23	13,2	47,5		3	1,9	20
10512	C	4/2,5	48 x 44	23	15,2	47,5		4	2,1	24
10513	D	4/3	48 x 44	23	19,6	47,5		5	2,5	25
10514	Gruppo 4	4	48 x 44	23	24	47,5		6	2,5	32
10520	B	5/2	58 x 53	27	13,2	57,5		3	1,9	20
10515	C	5/2,5	58 x 53	27	15,2	57,5		4	2,1	24
10516	D	5/3	58 x 53	27	19,6	57,5		5	2,5	25
10521	Gruppo 4	5/4	58 x 53	27	23,6	57,5		6	2,5	32
10517	D	6/3	72 x 66	33	19,6	71,3		5	2,5	25
10522	Gruppo 4	6/4	72 x 66	33	23,6	71,3		6	2,5	32
10523	D	7/3	80 x 74	36	19,6	79,3		6	2,5	25
10524	Gruppo 4	7/4	80 x 74	36	23,6	79,3		6	2,5	32

	BOSCH	KRACHT	HPI
A	HY/ZBR/1. HY/ZBS...	KP02/FK	
B	HY/ZFS.... HY/ZFS...204	KP12/FK K12/FL	2000 CB1
C	HY/KVE.... HY/MZFR....		
D	HY/ZGFS.... HY/MZGS....	KP22/FL	3000 DB1 3000 CB1

**Csapágyazott tengelyhajtás szivattyúkhöz , hidromotorokhoz**

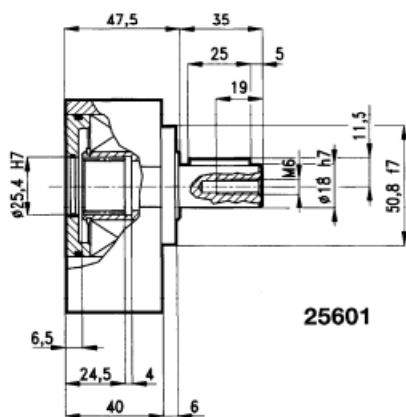
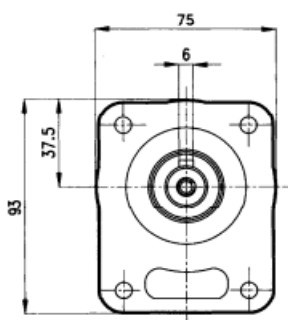
25401  
25601

25402  
25602



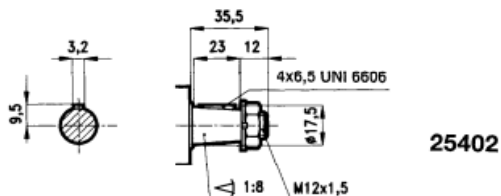
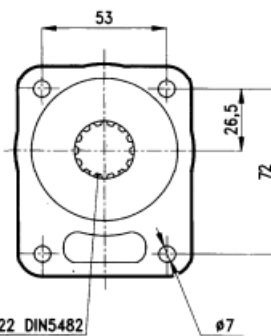
25401

100 daN.  
→ 75 daN.



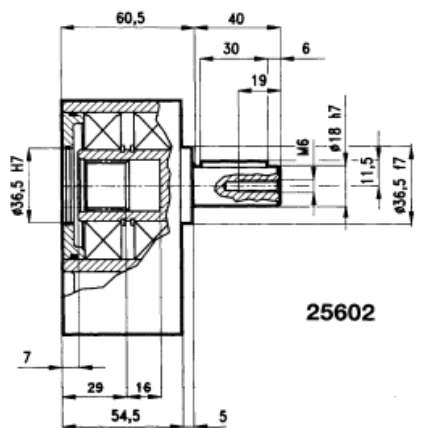
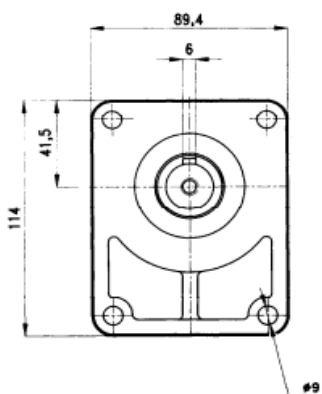
25601

90 daN.



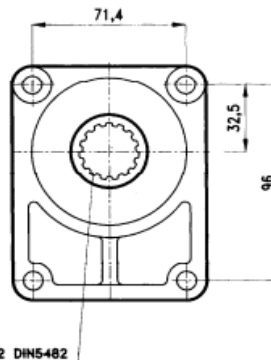
25402

170 daN.  
→ 130 daN.



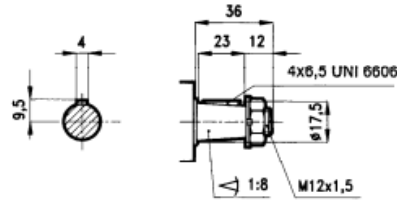
25602

110 daN.



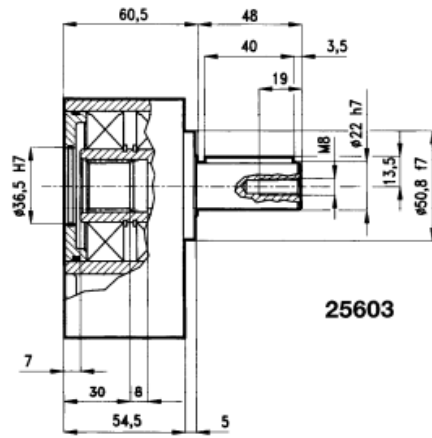
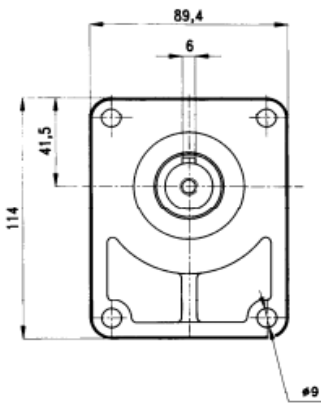
25403  
25603

25403.1  
25603.1



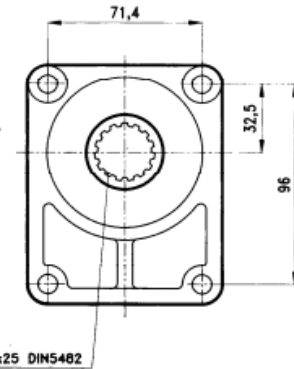
25403

285 daN.  
220 daN.

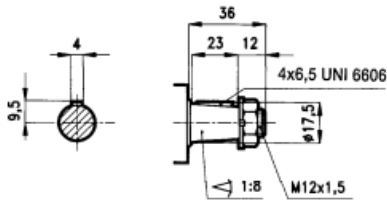


25603

130 daN.

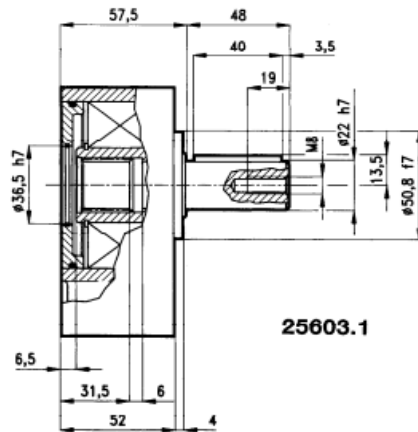
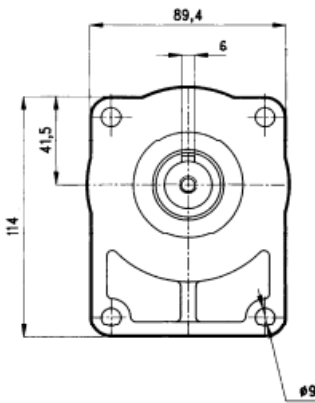


Z15 28x25 DIN5482



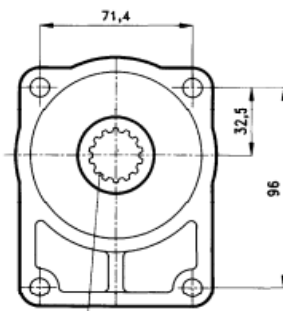
25403.1

285 daN.  
220 daN.



25603.1

130 daN.



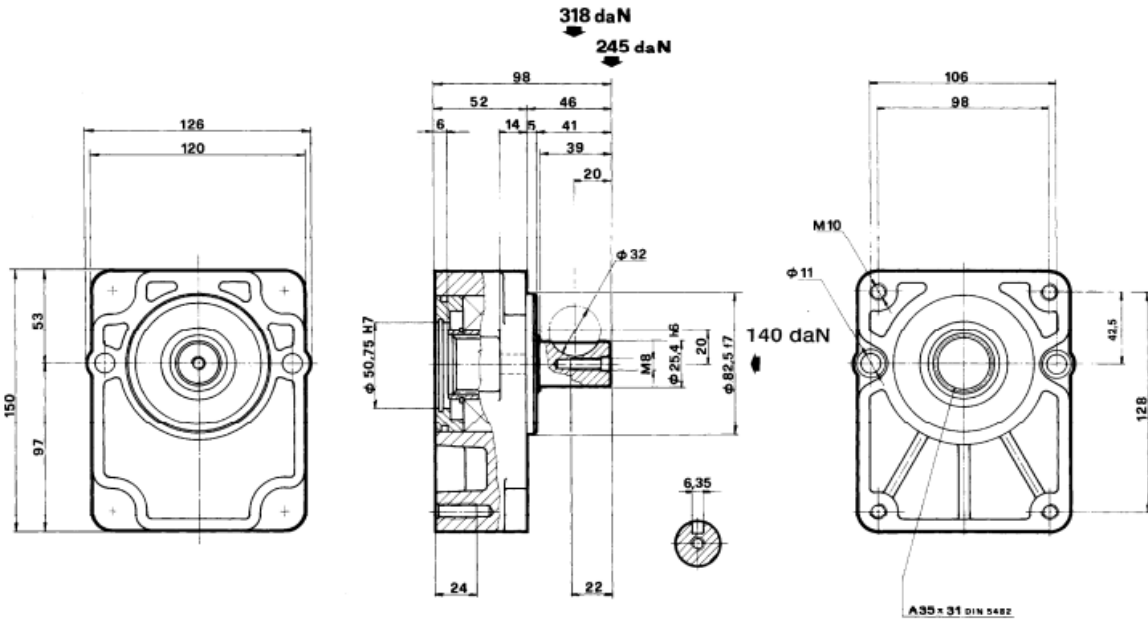
Z15 28x25 DIN5482



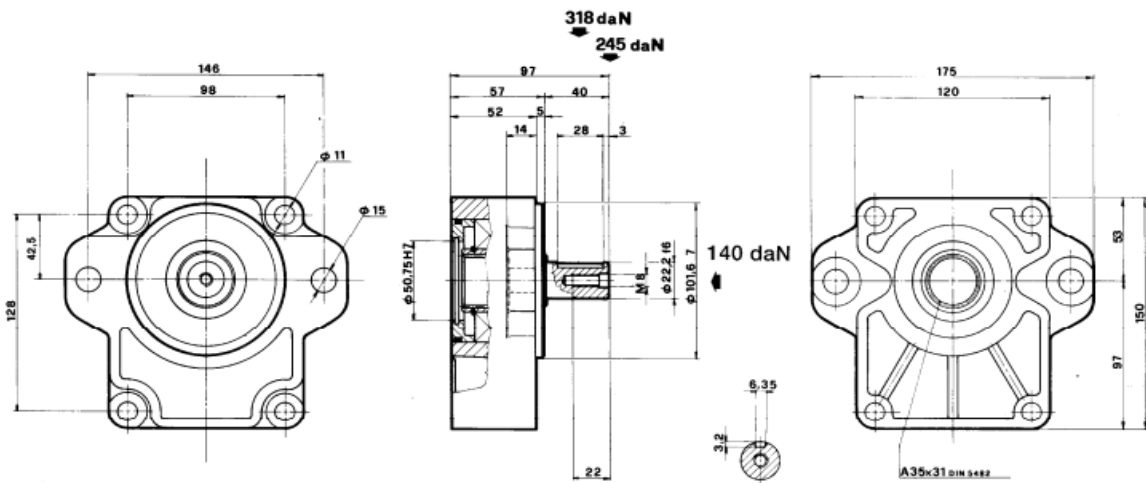


25607

25608



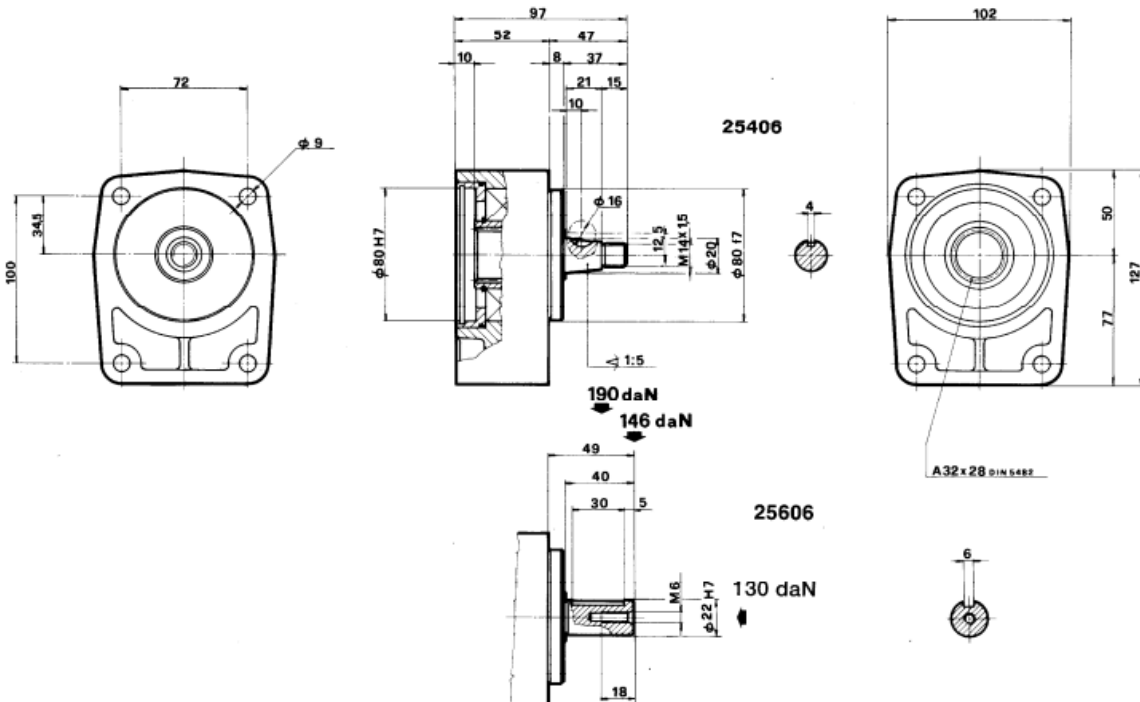
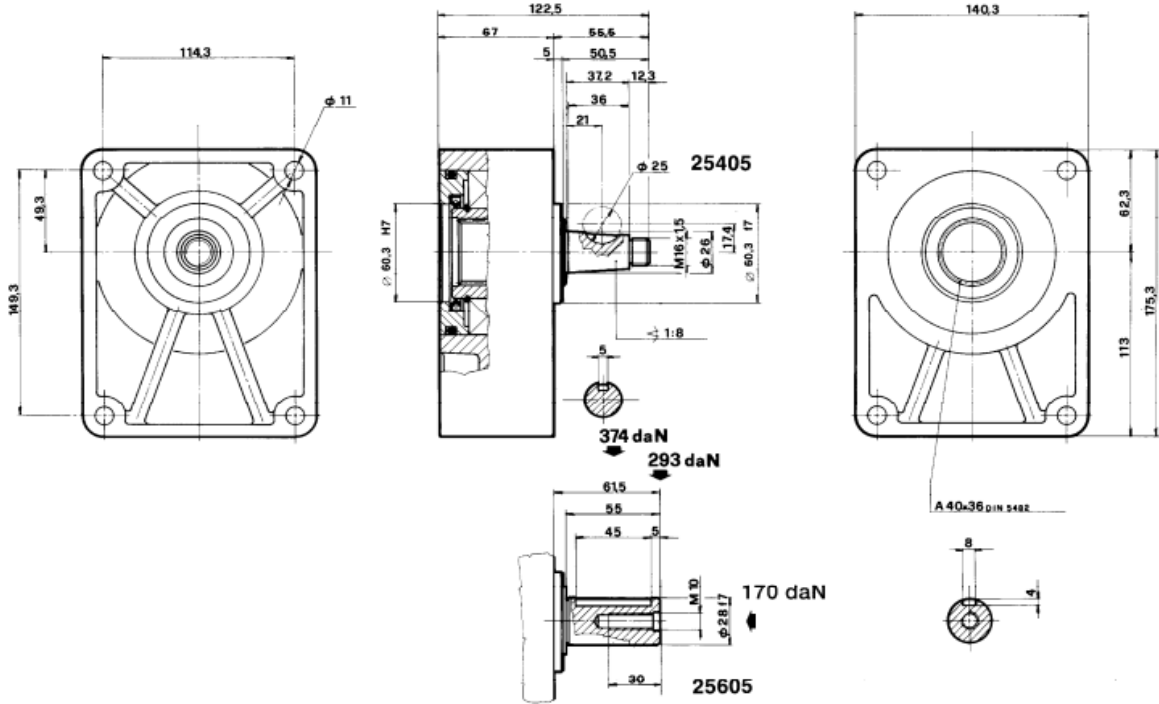
25607



25608

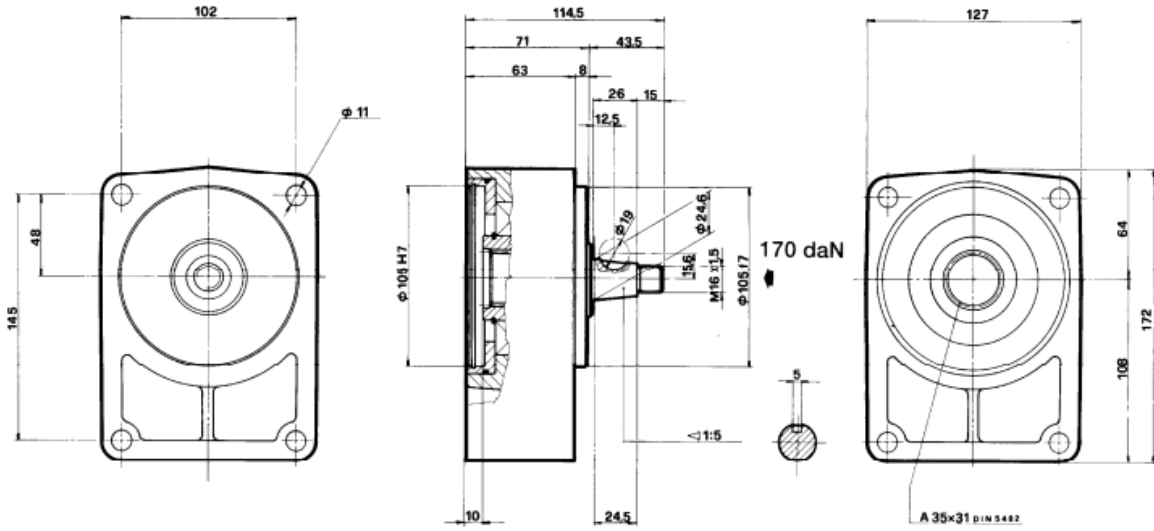
25405  
25605

25406  
25606

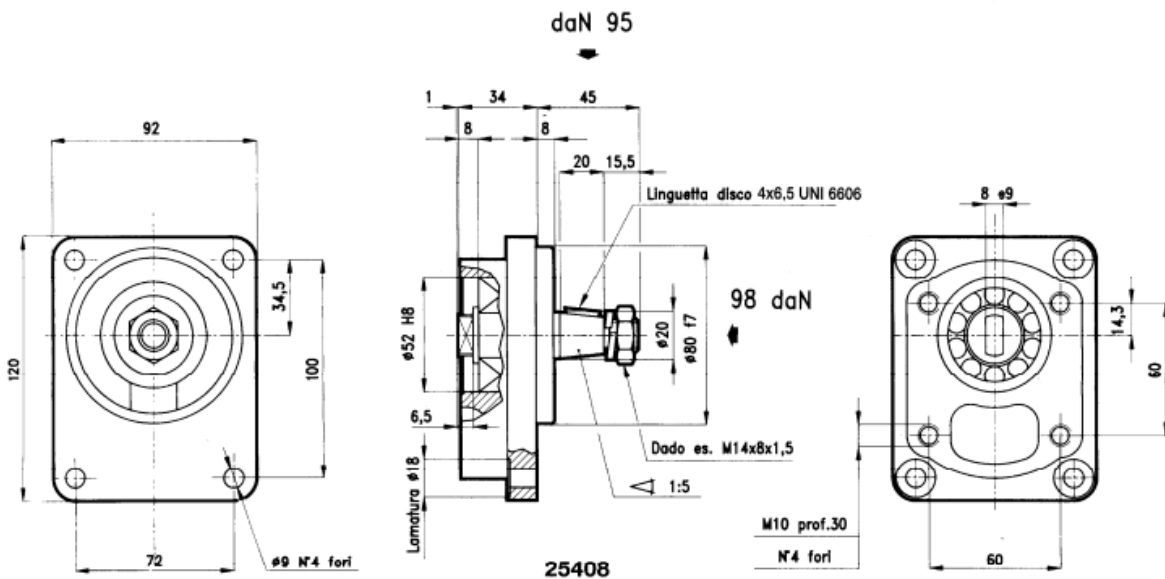


25407

25408

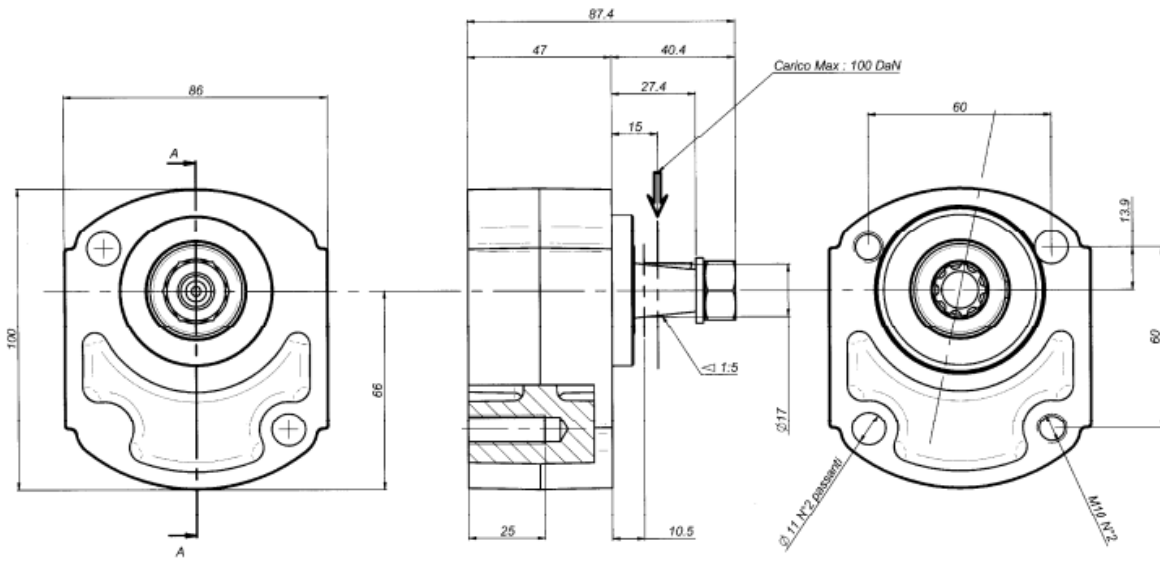


25407

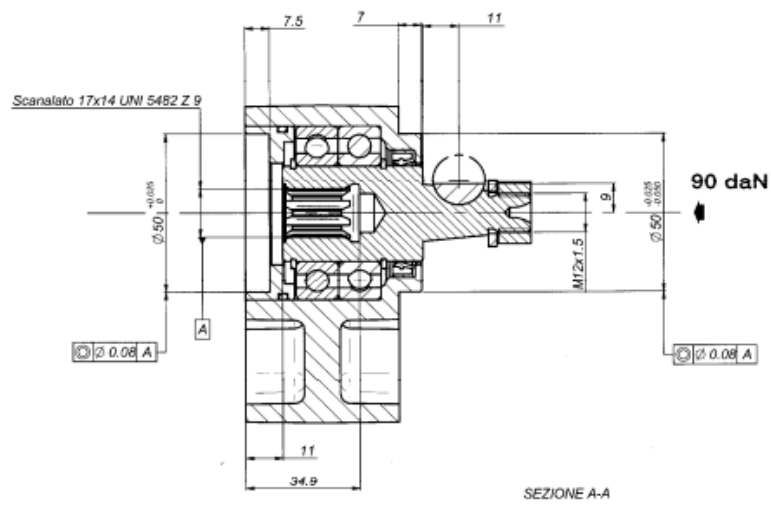


25408

25409

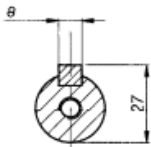
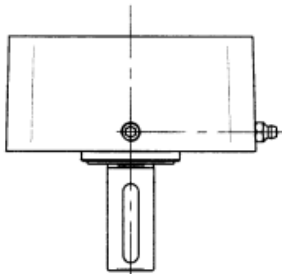
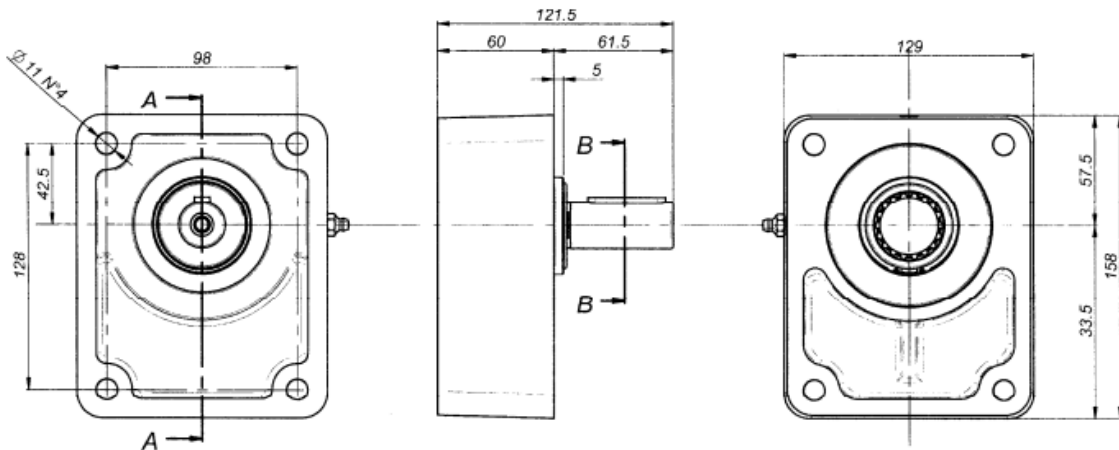


25409

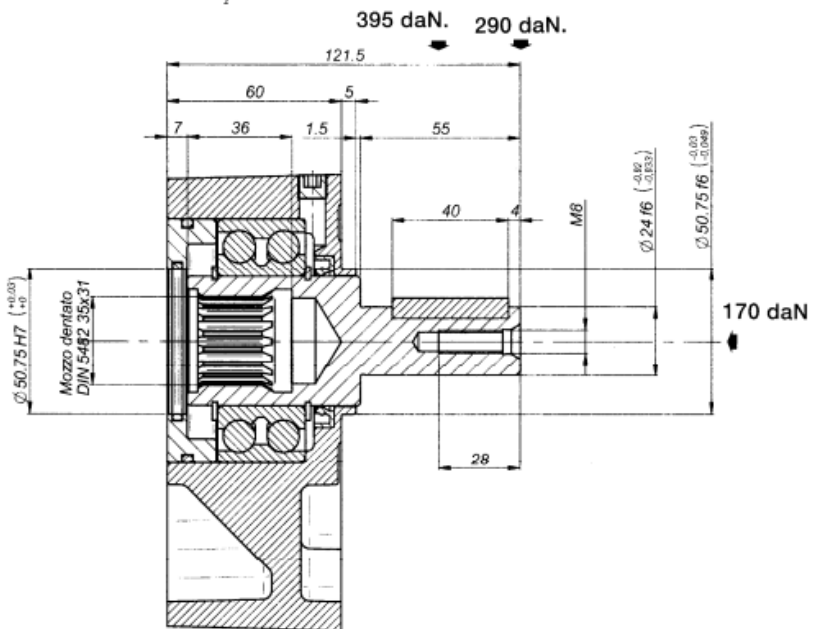




25610/24



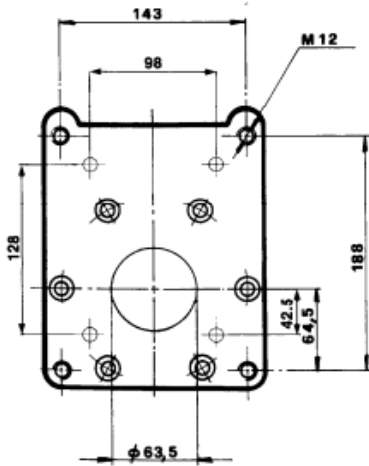
SEZ.: B-B  
1:2



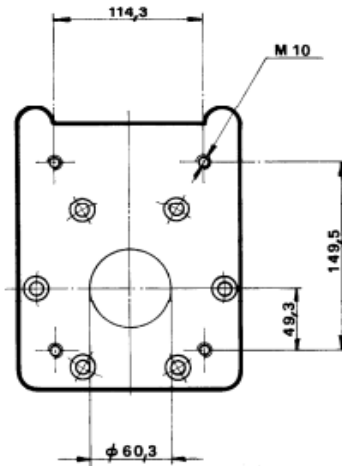
25610/24

SEZ.: A-A  
1:2

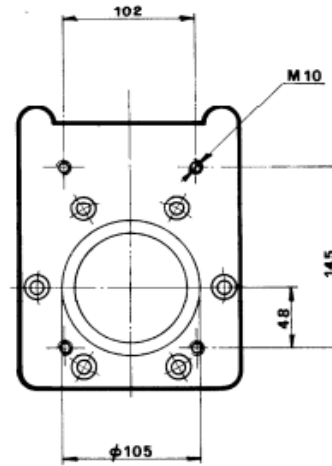




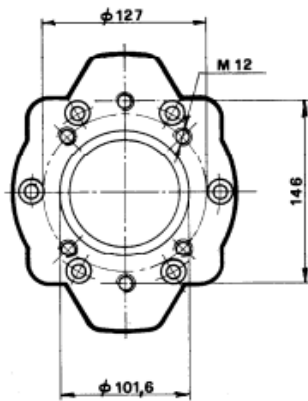
4 P 30403  
3 P 30401



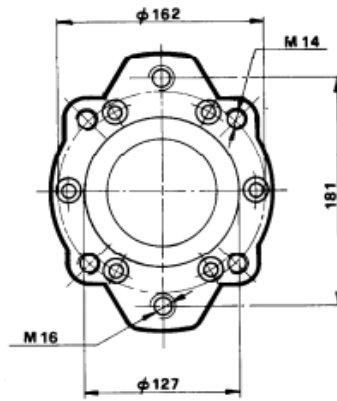
3,5 P 30402



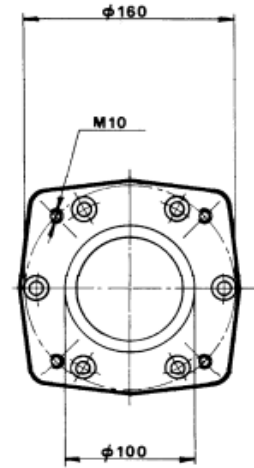
Bosch ZG3 30417



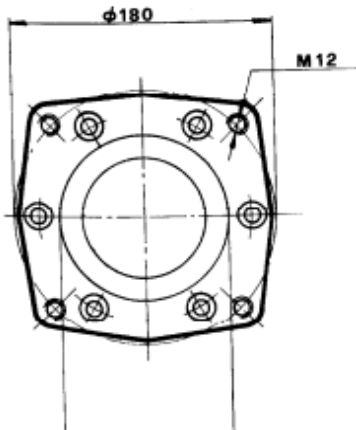
SAE B 2-4 fori  
30421 - 30422



SAE C 2-4 fori  
30431 - 30432



Linde Guldner PF 20-35-50  
30461 - 30462



Linde Guldner PF 75  
30463





éég : Lt. 0,220

Súly
Kg
5,5
5,5
5,5
5,5
5,5
5,5







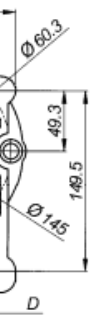




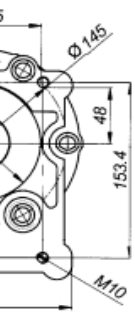
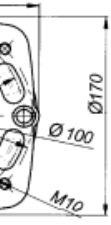








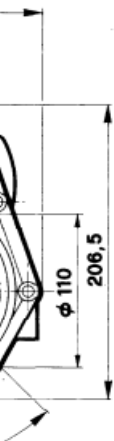
D



75	ULTRA PL DDMTY
09	<b>90208</b>
	10
	24

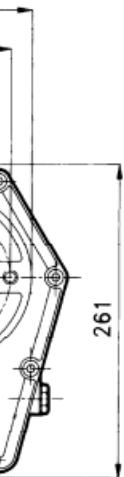






más : It 0,220

Súly Kg
5
5
5
5
5
5

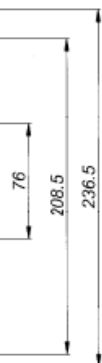


5482

04

iség : It 0,350

Súly Kg
8,5
8,5
8,5
8,5
8,5
8,5



: SAE 6B

D :  
x22

más : lt 0,220

Súly Kg
10
10
10
10
10
10









<b>D</b>	<b>L</b>
,4	14,5
	7
,4	14,5
	9
	16
,17	22
	22,5
,17	22
	22,5
,4	14,5
	16
,17	22
	22,5
	26
,4	14,5
	16
,17	22
	22,5
	26
,4	14,5
	16
	16
,17	22
	22,5
	26
,76	32
	38

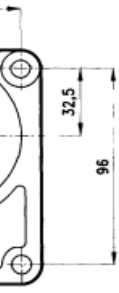
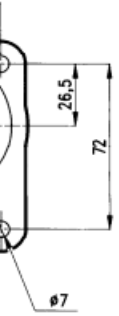
D	L
4	14,5
	16
,17	22
	22,5
	26
,76	32
	32
	38
,35	42
	42
,17	22
	22,5
	26
,76	32
	32
	38
,35	42
	42
,17	22
	22,5
	26
,76	32
,35	42
	26
,76	32
,35	42
	26
,76	32
,35	42

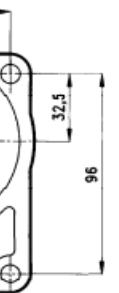
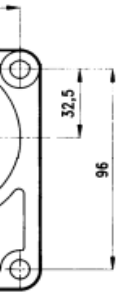
<b>D</b>	<b>L</b>
2	9
2	9
3	13,5
2	9
2	4,6
3	13,5
4	31
3	13,5
5	41
3	13,5
4	31
5	41
3	13,5
3	13,5

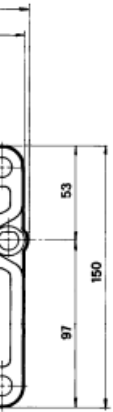


E	L
1	12
1	10
	20
1,9	20
1,9	20
1,9	20
2,1	24
1,9	20
	25
1,9	20
2,1	24
2,5	25
1,9	20
2,1	24
2,5	25
2,5	32
1,9	20
2,1	24
2,5	25
2,5	32
2,5	25
2,5	32
2,5	25
2,5	32

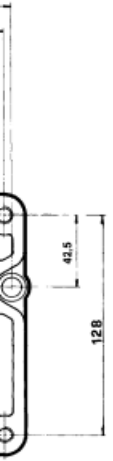
I
CB1
DB1 CB1

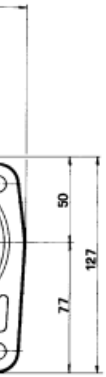
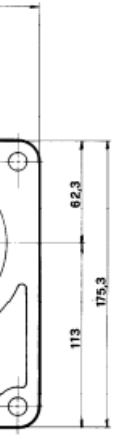


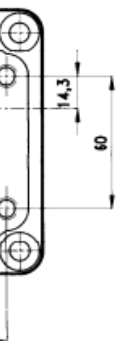
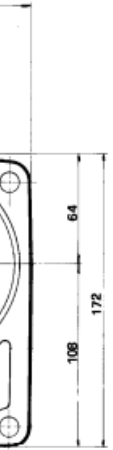














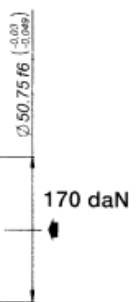
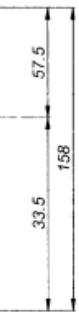
30

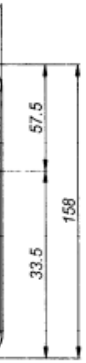
x44 DIN5482

0

45

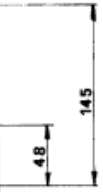
40





170 daN  
↓

M 10



F 20-35-50  
462