

# HIDRAULIKUS ELOSZTÓSZELEPEK 2012

## MONOBLOCK

### TIPUS

40-ES SOROZAT    ÁTERESZTŐKÉPESSÉG : 40 L/PERC  
 NYOMÁS : 250 bar

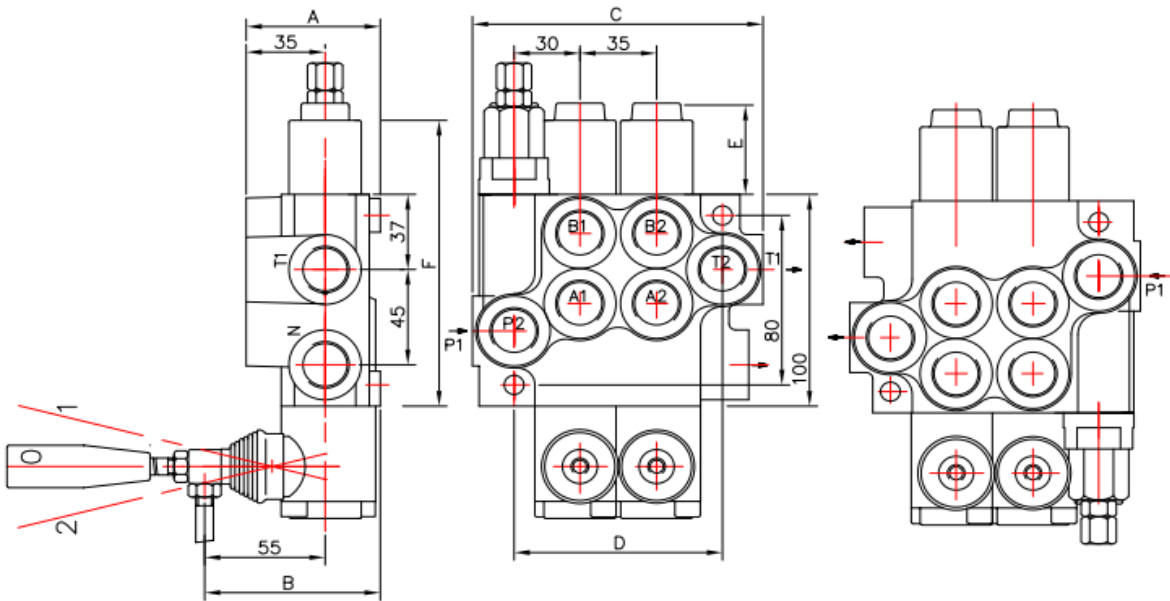


Table 1

	A	B	C	D	P1	P2	T1	T2
P40	60	80	85	60	+	-	+	-
02P40	60	80	129	97	+	+	+	+
03P40	60	80	164	132	+	+	+	+
04P40	60	80	199	167	+	+	+	+
05P40	60	80	234	202	+	+	+	+
06P40	60	80	269	237	+	+	+	+
07P40	60	80	304	272	+	+	+	+
2P40	60	80	129	97	+	+	+	+
3P40	60	80	164	132	+	+	+	+
4P40	60	80	199	167	+	+	+	+

Table 2

spool control	E	F
1; 4; 5; 6; 7; 8; 9; 10; 11;	40	193
2; 3;	72	225
16	+	+

Rugós visszatérítésűek, alaphelyzetben 0 állásban

- P 40
- 2P 40
- 3P 40
- 4P 40
- 5P 40
- 6P 40
- 7P 40

JOY-STICK

Úszó funkció/szekciónként :

**80-AS SOROZAT** ÁTERESZTŐKÉPESSÉG : 80 L/PERC  
 NYOMÁS :250 bar

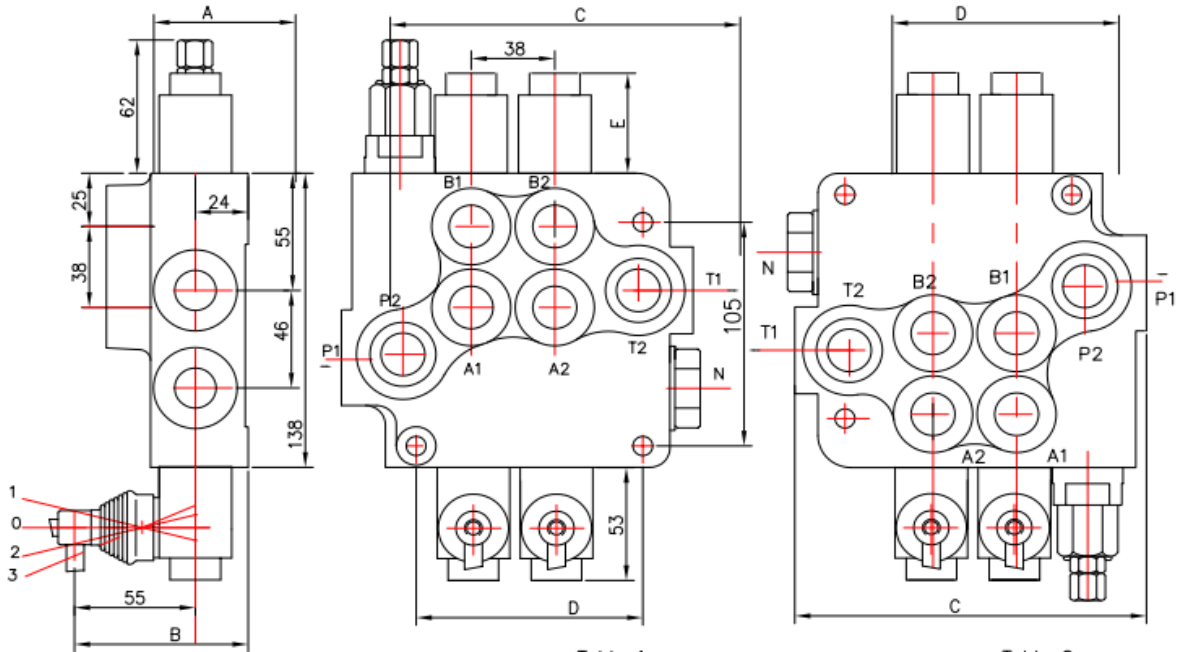


Table 1

	A	B	C	D	P1	P2	T1	T2
P80	65	79	107	65	*	*	-	-
2P80	80	94	160	103	*	*	*	*
3P80	80	94	198	141	*	*	*	*
4P80	80	94	242	179	*	*	*	*
5P80	80	94	280	217	*	*	*	*
6P80	80	94	318	255	*	*	*	*

Table 2

Spool control	E
1, 4, 5, 6, 7, 8, 9, 10, 11,	40
2, 3, 12, 14	72
13	44

Rugós visszatérítésűek, alaphelyzetben 0 állásban

**P 80**

**2P 80**

**3P 80**

**4P 80**

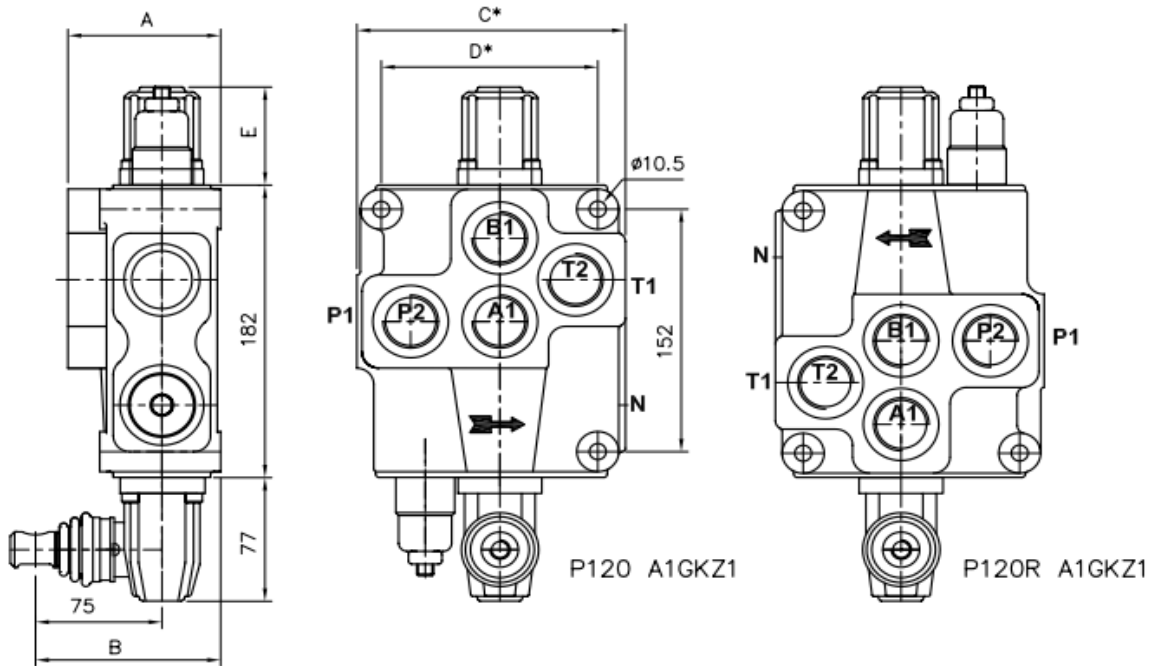
**5P 80**

**6P 80**

**JOY-STICK**

Úszó funkció/szekciónként :

**120-AS SOROZAT ÁTERESZTŐKÉPESSÉG : 120 L/PERC  
NYOMÁS : 250 bar**



\* MINDEN KÖVETKEZŐ + 53 mm  
SZEKCIÓ

	A	B	C	D	P1	P2	T1	T2
P120	92	110	160	129	+	+	+	+

spool control фиксации золотника	E
1; 2, 3, 4; 5; 6; 7; 8; 9; 10; 11;	64
12	74

**Rugós visszatérítésűek, alaphelyzetben 0 állásban  
P 120**

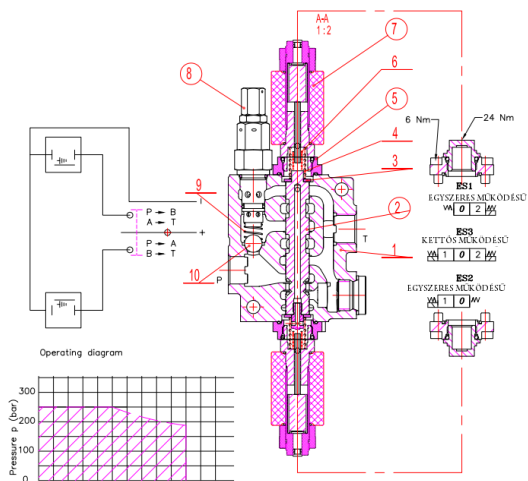
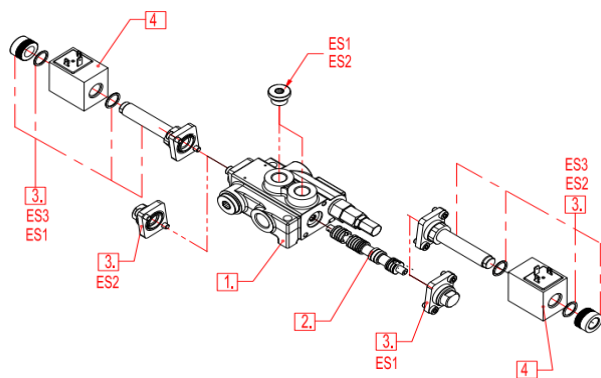
**2P 120**

**3P 120**

**4P 120**

# ELEKTROMÁGNESES MŰKÖDTETÉSŰ ELOSZTÓSZELEPEK

ORDERING EXAMPLE  
 Z50 A ES3 12VDC G  
 1 2 3 4 5



**Z 50 ES3 12/24V DCG**

**2Z 50 ES3 12/24V DCG**

**3Z 50 ES3 12/24V DCG**

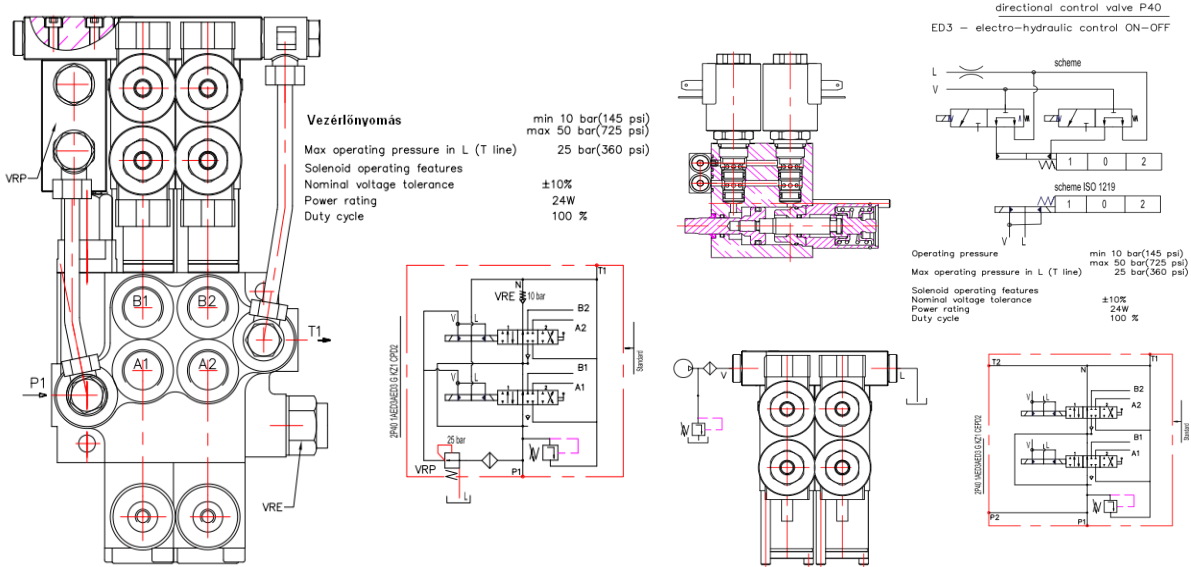
**4Z 50 ES3 12/24V DCG**

**5Z 50 ES3 12/24V DCG**

**6Z 50 ES3 12/24V DCG**

**7Z 50 ES3 12/24V DCG**

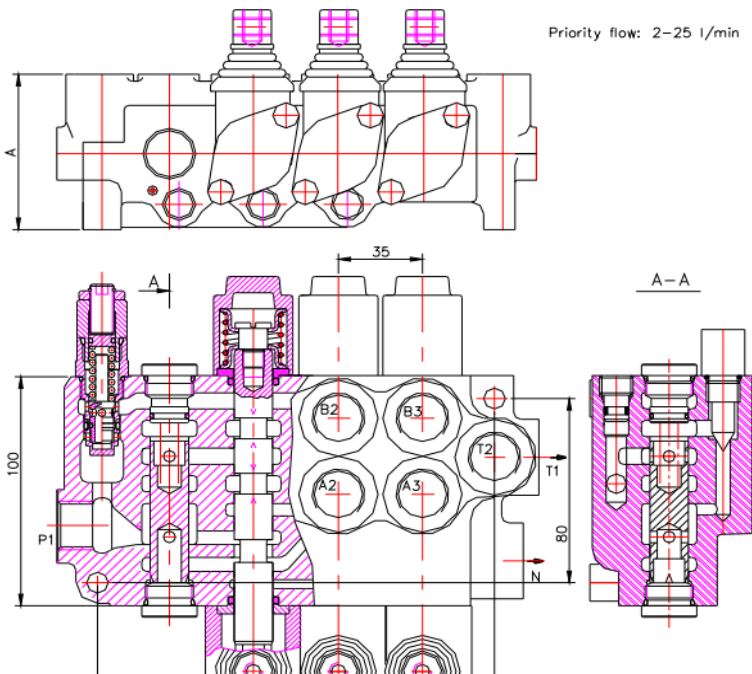
## Elektrohidraulikus működtetésű elosztószelepek

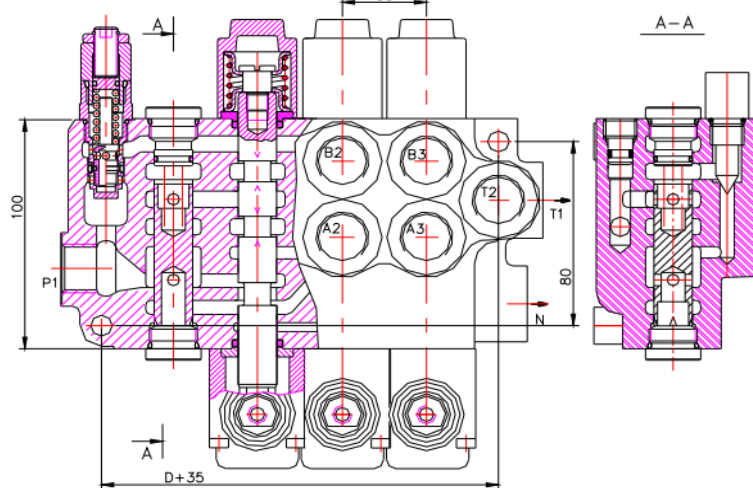


**P 40 ED3 CEED1 12/24VDC**  
**2P 40 ED3 CEED2 12/24VDC**  
**3P 40 ED3 CEED3 12/24VDC**  
**4P 40 ED3 CEED4 12/24VDC**

**P 80 ED3 CEED1 12/24VDC**  
**2P 80 ED3 CEED2 12/24VDC**  
**3P 80 ED3 CEED3 12/24VDC**  
**4P 80 ED3 CEED4 12/24VDC**

## Átfolyásszabályzóval szerelt vezérlőszелеп



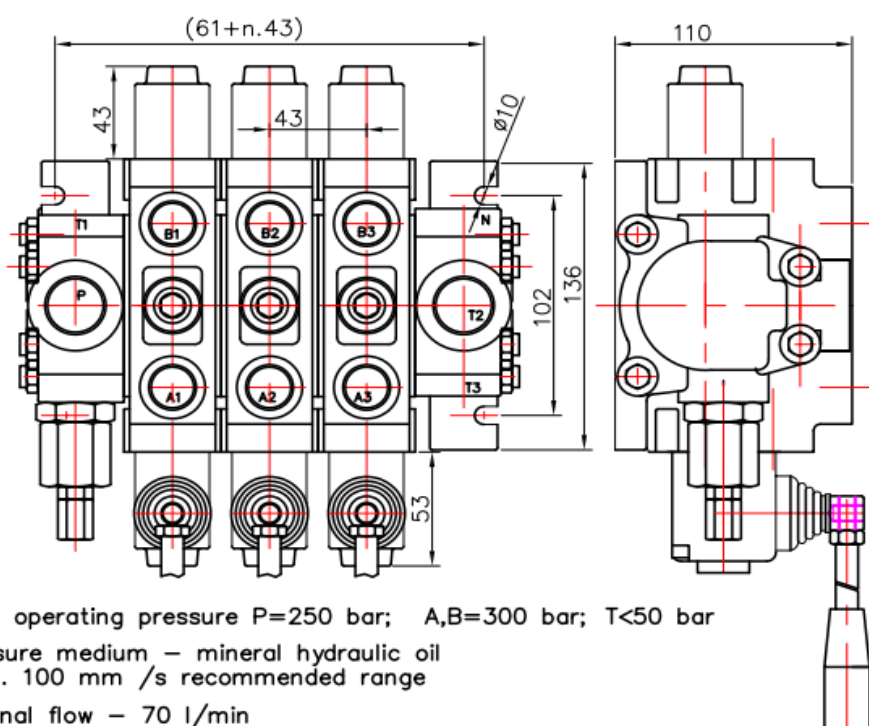


**3PF 40**

## **SZEKCIONÁLT VEZÉRLŐTÖMBÖK**

**Áteresztőképesség : 70 l/perc**

**Nyomás : 250 bar**



max. operating pressure  $P=250$  bar;  $A,B=300$  bar;  $T<50$  bar

pressure medium – mineral hydraulic oil  
20 ... 100 mm /s recommended range

nominal flow – 70 l/min

n – number of sections – max 8

**Rugós visszatérítésűek, alaphelyzetben 0 állásban**

**PC 70**

**2PC 70**

**3PC 70**

**4PC 70**

**5PC 70**

**6PC 70**

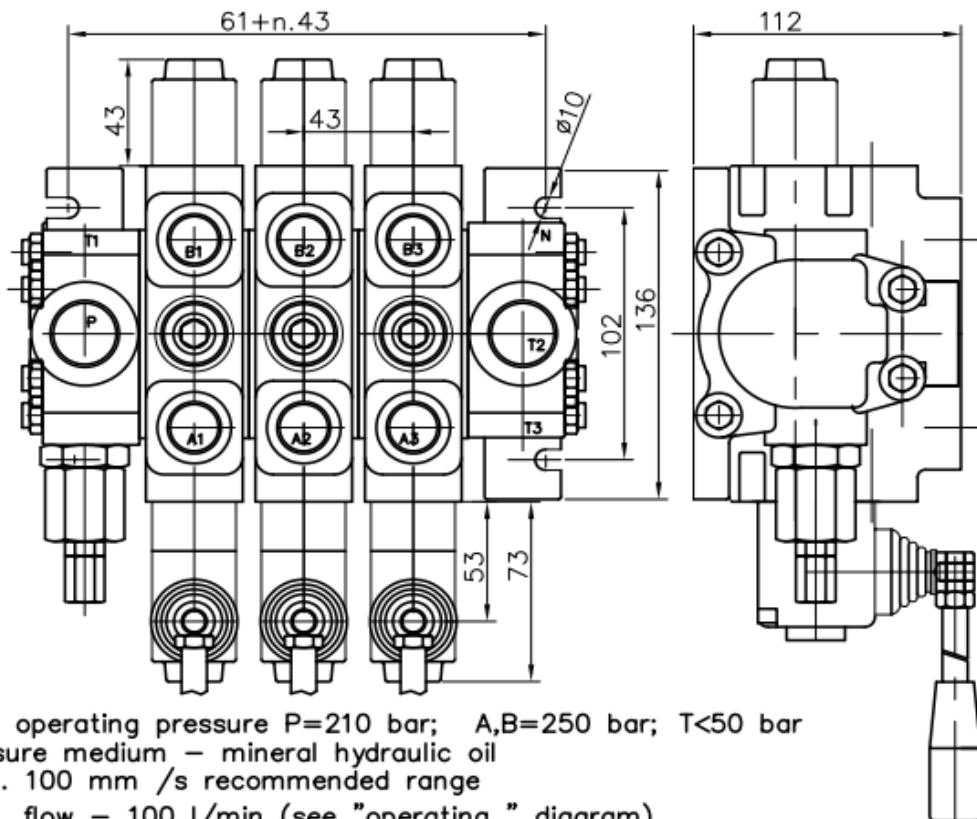
7PC 70

8PC 70

JOY-STICK

Áteresztőképesség : 100 l/perc

Nyomás : 210 bar



max. operating pressure P=210 bar; A,B=250 bar; T<50 bar  
pressure medium – mineral hydraulic oil  
20 ... 100 mm /s recommended range  
max flow – 100 l/min (see "operating " diagram)  
nominal flow – 80 l/min (see "operating " diagram)  
n – number of sections – max 8

Rugós visszatérítésűek, alaphelyzetben 0 állásban

PC 100

2PC 100

3PC 100

4PC 100

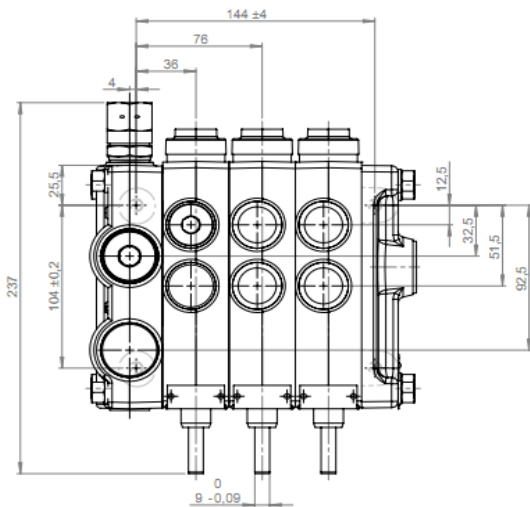
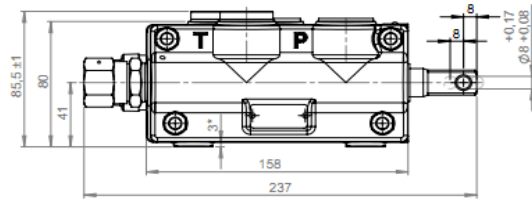
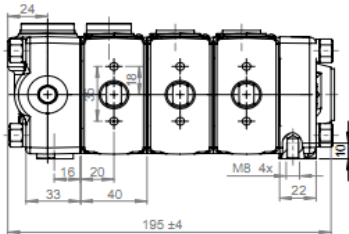
5PC 100

6PC 100

## JOY-STICK

Áteresztőképesség : 60 l/perc

Nyomás : 70 - 200 bar



1. Technical parameters
  - 1.1. Nominal flow- 60 dm<sup>3</sup>/min
  - 1.2. Nominal pressure- 20 MPa
  - 1.3. Pressure range from 7 to 20 MPa

### 2.1. Way of ordering

- Type
- Inlet section
- Section
- Outlet

2.2. In one valve all sections should be with one and the same hydraulic scheme of distribution- parallel or series

2.3. All dimensions marked with \* are for check up.

PX 346

2PX 246

3PX 346

4PX 346

5PX 346

6PX 346



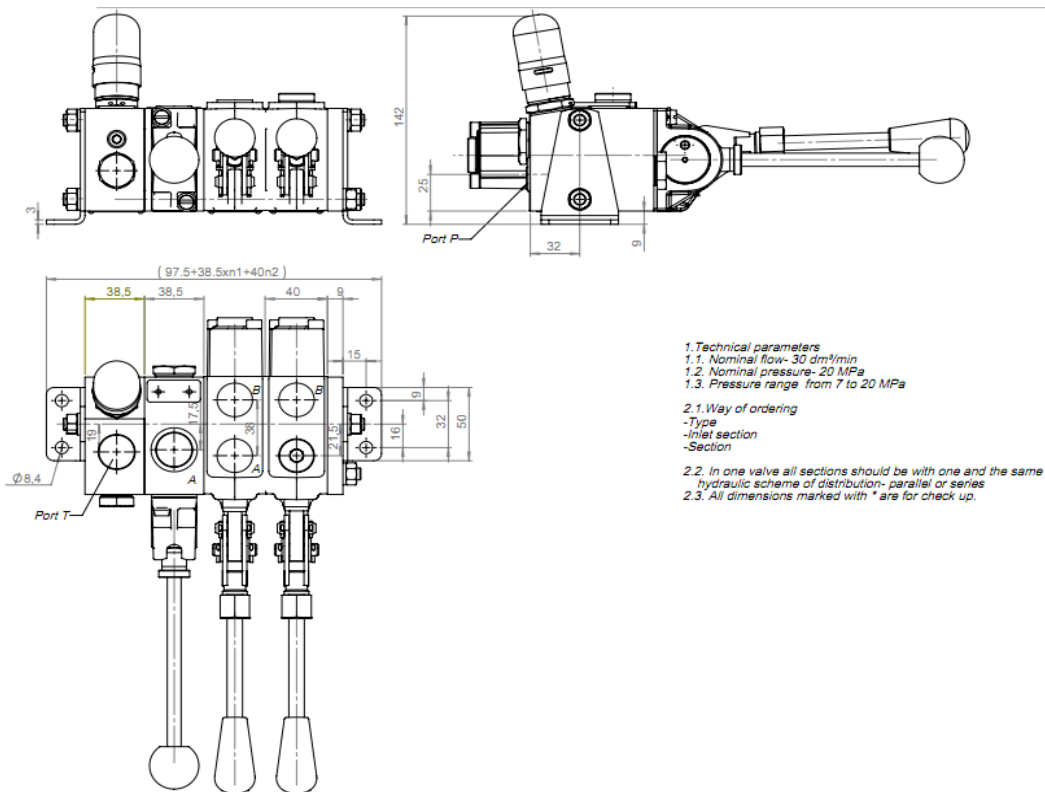
7PX 346

8PX 346

9PX 346

10PX 346

11PX 346



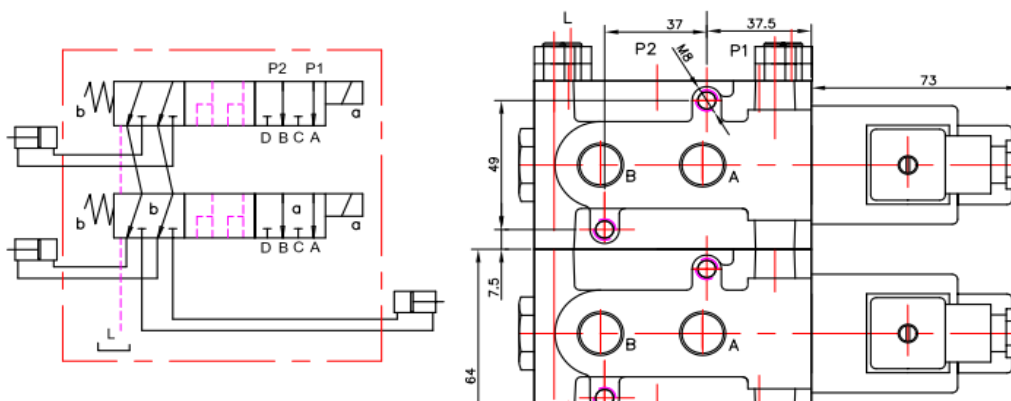
PX 348

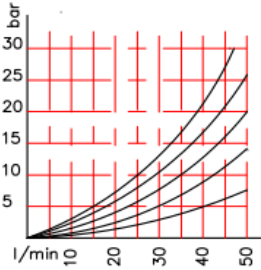
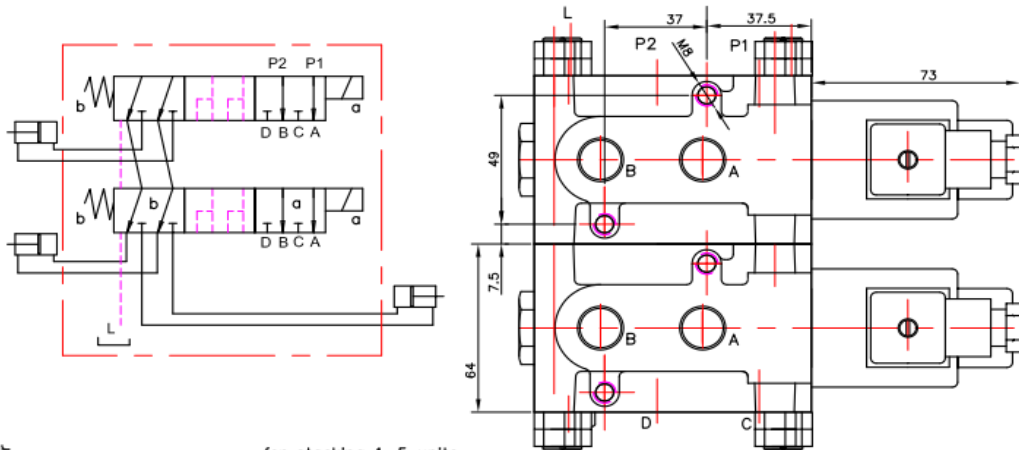
2PX 348

3PX 348

4PX 348

## Elektromágneses működtetésű útváltószelep





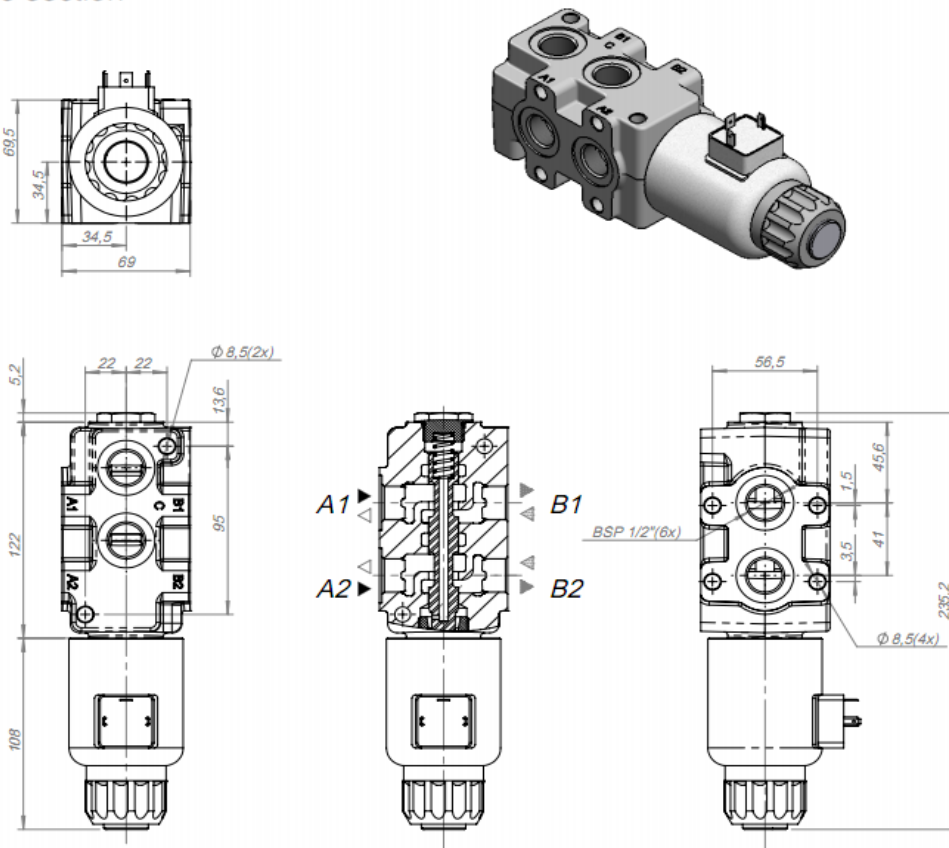
for stacking 1-5 units

max P	with L	bar	315	Supply voltage	V	12;24 DC
max P	without L	bar	210	Power	W	36, 29
Flow rate	max	l/min	50	Switching frequency	1/h	15 000
oil temperature		°C	-20+70	Ambient temperature		to 50°C
viscosity		mm/s	15-380	Coil temperature		to 180°C
filtration	NAS1638		9	Duty cycle		100%

## DVS6-6/2L

## Elektromágneses működtetésű útváltószelep

Single section



## SVV-90

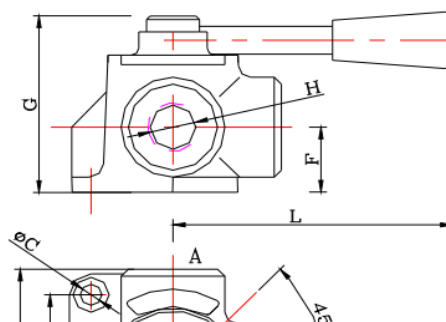
## Kézi működtetésű útváltószelep

### SPECIFICATIONS

Ordering code		357	358	359
max. Pressure	bar	300	250	220
max. Flow	i/min	60	90	120

Table 1

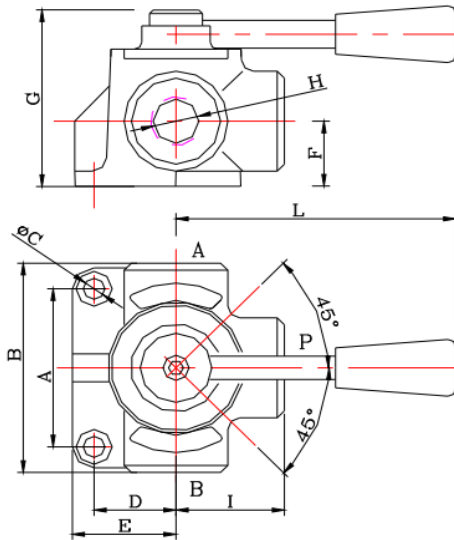
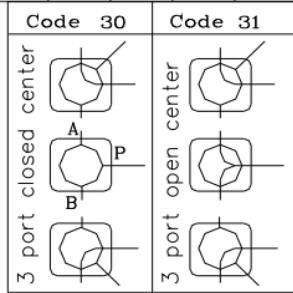
	Code 30	Code 31
center		



**SPECIFICATIONS**

Ordering code		357	358	359
max. Pressure	bar	300	250	220
max. Flow	l/min	60	90	120

Table 1

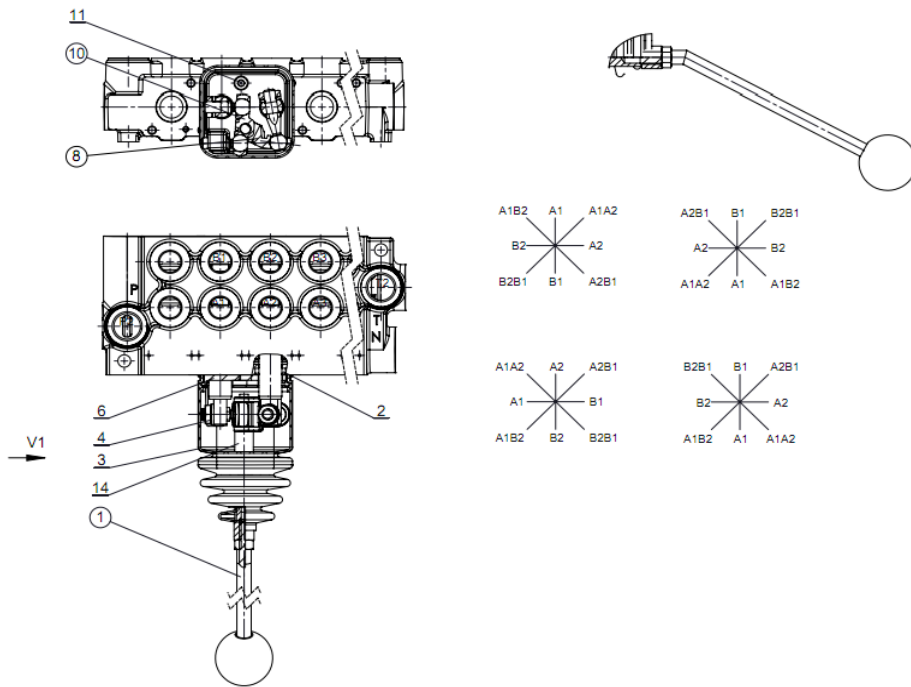


Dimensions and weight (Table 2)

Ord.code	A	B	C	D	E	F	G	H			I	L	Weight
								BSP	NPT	SAE			
357	24	73	8.5	31	42	21	65	3/8	3/8	3/4-16	36	155	0.90
358	30	85	11	36	53	24	70	1/2	1/2	7/8-14	43	150	1.40
359	32	91	11	41	54	28	80	3/4	3/4	1 1/16-12	47	150	1.86

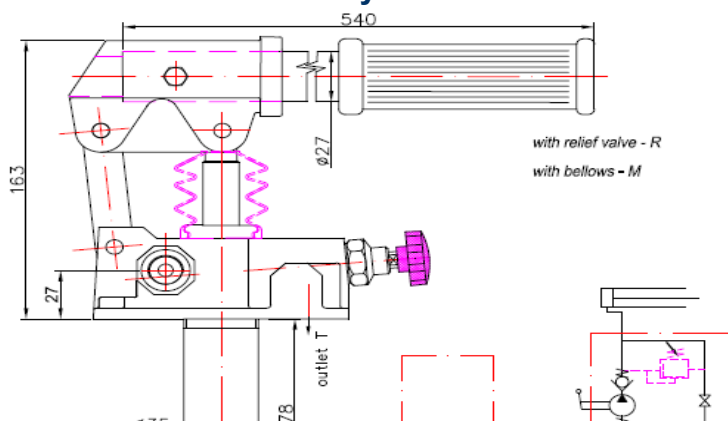
**357, 358, 359**

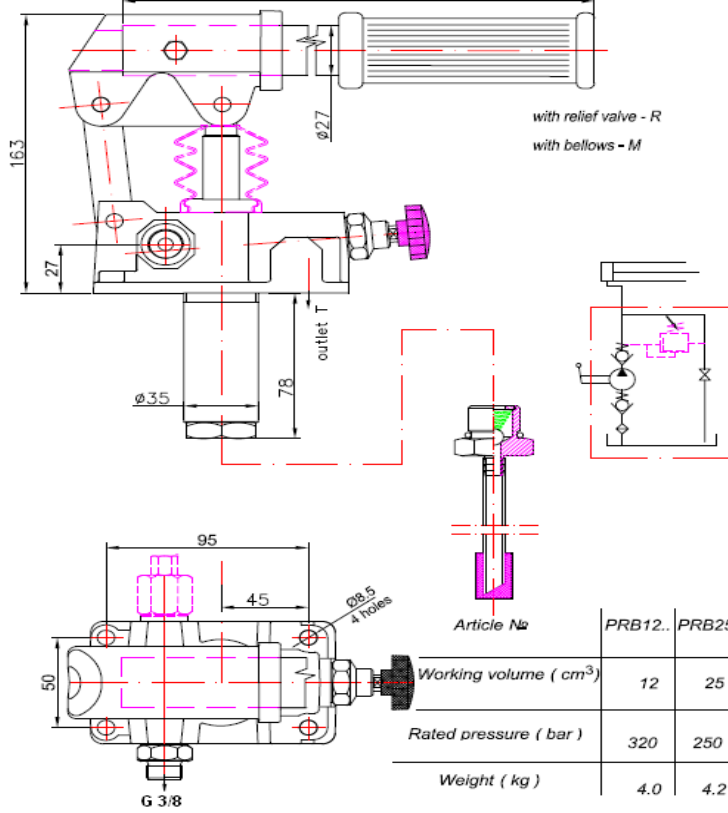
**JOY-STICK**



**P 40, P 80**

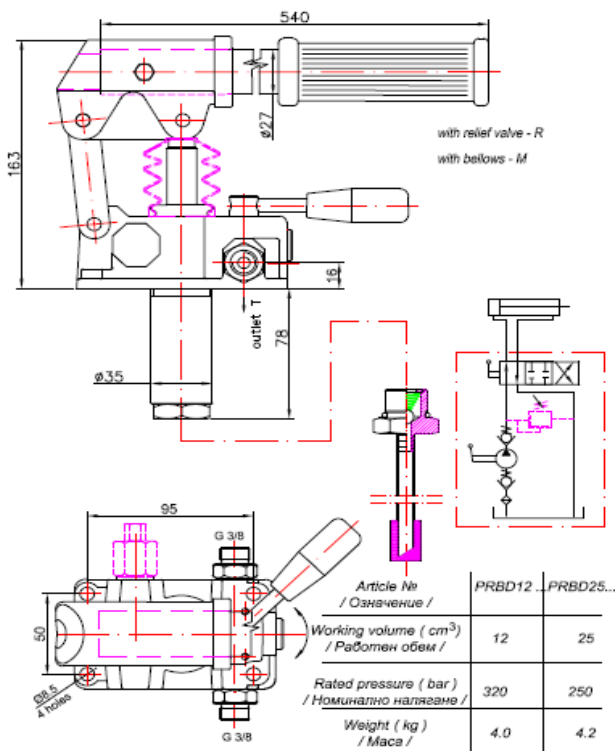
**Kézi működtetésű szivattyú**





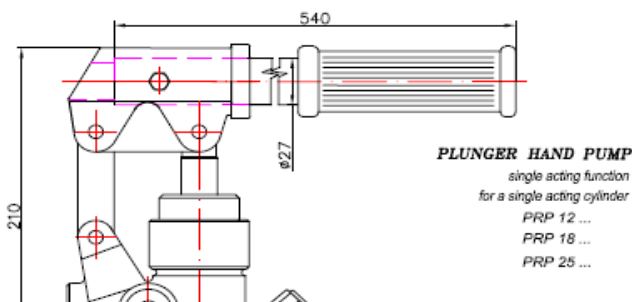
**PRB 12/25/408**

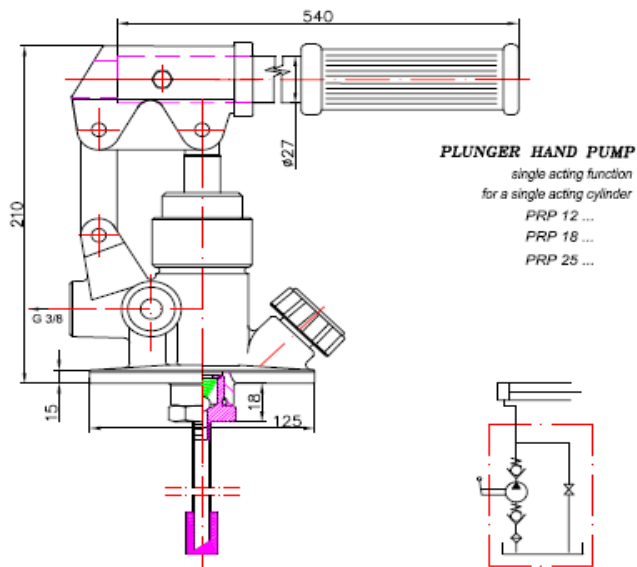
**Kézi működtetésű szivattyú útváltóval**



**PRBD12/25/412**

**Kézi működtetésű szivattyú**





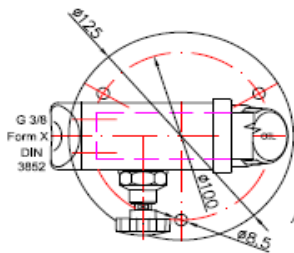
**PLUNGER HAND PUMP**

single acting function  
for a single acting cylinder

PRP 12 ...

PRP 18 ...

PRP 25 ...



Article № / Означеніе /	PRP 12	PRP 18	PRP 25
Working volume ( cm <sup>3</sup> ) / Работен обем /	12	18	25
Rated pressure ( bar ) / Номинално налягане /	300	200	160
Weight ( kg ) / Маса /	4.6	4.6	4.6

**PRP 12/18/25SS**

**Olajtartályok kézi működtetésű szivattyúkhhoz**

**Úrtartalom ( I )**

O 1

O 2

O 3

O 5

O 7

O 10

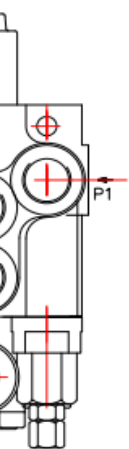
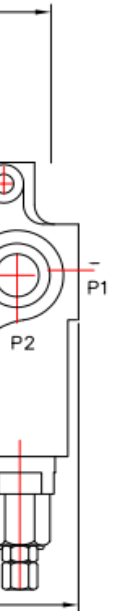


Table 2

	E	F
	40	193
	72	225
	+	+



2

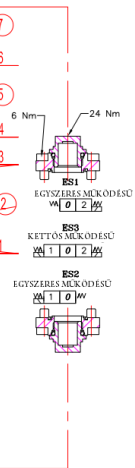
E
0
2
4

P1

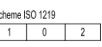
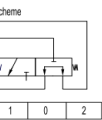
A1GKZ1

	E
	64
	74



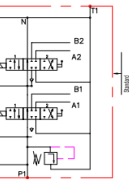


control valve P40  
lic control ON-OFF



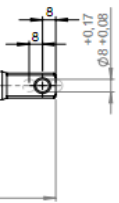
min 10 bar(145 psi)  
max 50 bar(725 psi)  
line) 25 bar(360 psi)

±10%  
24V  
100 %









raulic scheme of











